

2024
(2023 Data Year)

Certification of Public Road Mileage and Fuel Tax Mileage
To Nevada Department of Transportation

Annual certification of city owned/maintained Public Road/Street mileage, Fuel Tax Road/Street mileage within **Ely**.

Public Road Mileage: I hereby certify that there are 50.91 centerline miles of Public Road/Streets within the corporate limits as of December 31, 2023.

Number of Paved Miles: 35.65 Number of Unpaved Miles: 15.26

Please submit a full inventory of your Certified Public Mileage roads in one of the following formats:

1. Excel Spreadsheet
2. File Geodatabase
3. Shapefile
4. Map

Note: Your certification must include a full inventory of all maintained roads that match the above certified number. This inventory must include the begin and end points as well as the total length of each road, per NRS 365.550, Sections 8 (a)(b). Please submit a full copy of your database as NDOT requires all roads that are classified as Certified Public Roads to be submitted, not just yearly additions.

Motor Fuel Tax Mileage:

Note: Nevada Department of Transportation is requesting that you submit your Motor Fuel Tax mileage certification by **March 1, 2024**. If you do not submit your certification by this date, we will be unable to provide your certified mileage to the Department of Taxation and your agency will not receive reimbursable fuel taxes.

I hereby certify that there are 50.91 Motor Fuel Tax centerline road miles maintained by **Ely** as of December 31, 2023.

Please submit a full inventory of your Motor Fuel Tax roads in one of the following formats:

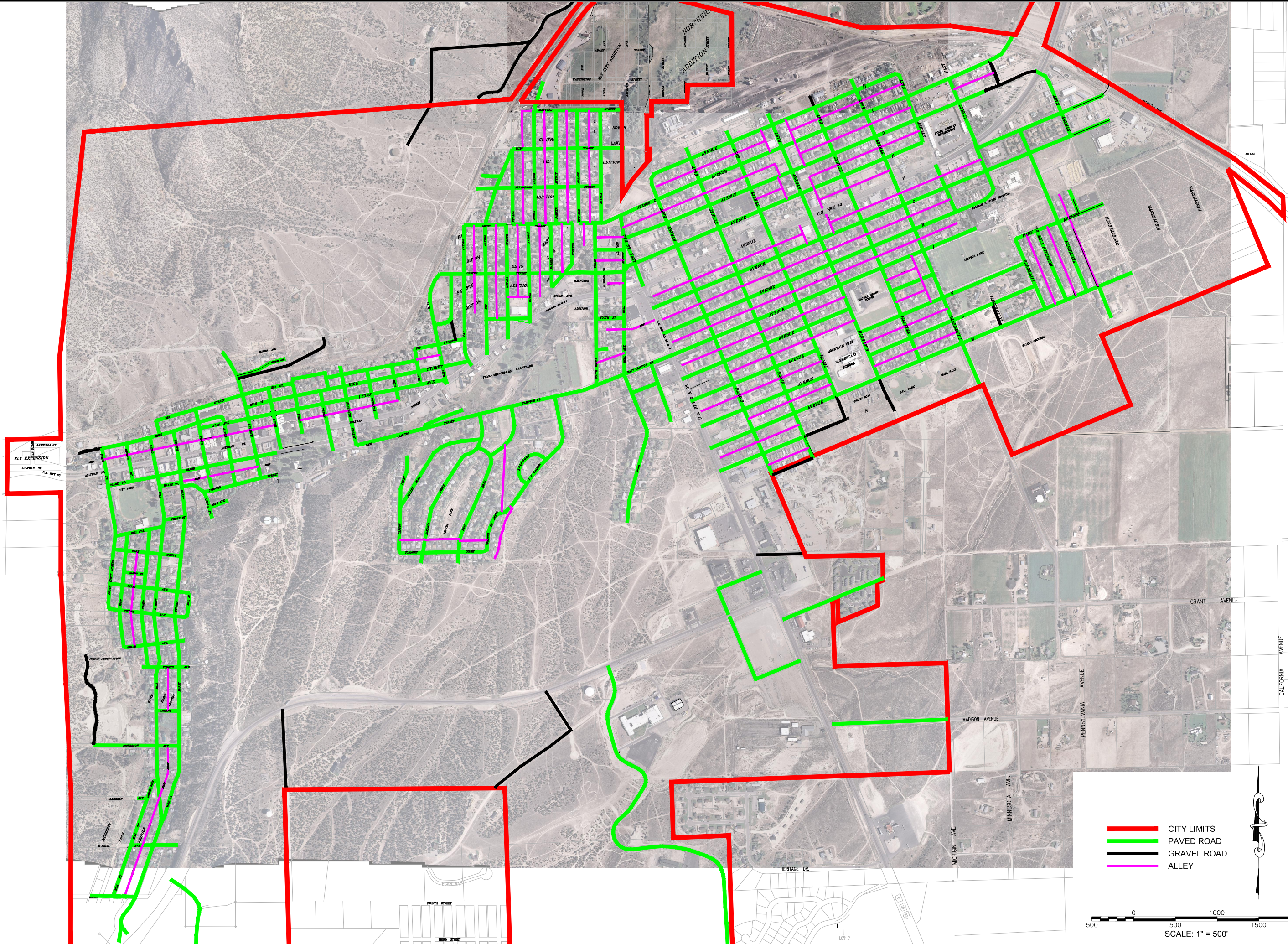
1. Excel Spreadsheet
2. File Geodatabase
3. Shapefile

Note: Your certification must include a full inventory of all maintained roads that match the above certified number. This inventory must include the begin and end points as well as the total length of each road, per NRS 365.550, Sections 8 (a)(b). Please submit a full copy of your database as NDOT requires all roads that are classified as Motor Fuel Tax to be submitted, not just yearly additions.

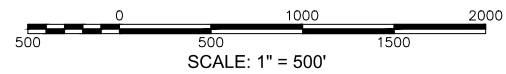
I _____ hereby certify that the above values accurately reflect the roadways under our jurisdiction.

Printed Name: MIKE CRACRAFT Date: _____

Title: PUBLIC WORKS DIRECTOR



- CITY LIMITS
- PAVED ROAD
- GRAVEL ROAD
- ALLEY



**NDOT 2024
CITY ROAD MILES**

CITY OF ELY
WHITE PINE COUNTY
NEVADA

PROJECT No.: 1208057
 DESIGNED BY: D.R.M.
 CHECKED BY: E.W.A.
 DATE: 2/12/24
 SCALE: 1"=500'
 SHEET

SEAL

BY: APP'D

DESCRIPTION

DATE

REV.

Basin Engineering
 Consulting Engineers & Land Surveyors
 1070 E. Adams Street, Ely, NV 89301
 Phone: (775) 289-9600 Fax: (775) 289-9802