

NEVADA NORTHERN RAILWAY

NATIONAL HISTORIC LANDMARK



Nevada Northern Railway Foundation

A Nevada 501 (c) 3 Non-Profit Corporation

Depot: 1100 Avenue A, Ely, Nevada 89301

Mailing Address: PO Box 150040, Ely, Nevada 89315

Voice: (775) 289-2085 • Web: www.nnry.com • E-mail: info@nnry.com

Monthly Operations Report for April 2023

1. Locomotive Status – Updated
 - a. Locomotives in service: #81, #105, #109, #204, #310, Wrecking Crane A & Rotary B.
 - b. Locomotive 93 is out-of-service. Repairs are proceeding on her valve chests. We have finished boring the cylinders.
 - c. Locomotive 40 is out of service for her heavy repairs. We have started on her repairs; she will be out of service until 2024.
 - d. Locomotive 801 is blue carded, that means she is operational.
 - e. Locomotives out of service needing moderate repairs: #201 and #34
 - f. Locomotives waiting funding for restoration: Steptoe Valley Smelting and Mining #309, Kennecott 802 and Rotary Snowplow B (for boiler overhaul.)
 - g. Locomotives out of service needing heavy repairs #80 and the military locomotives.
3. Rolling Stock Status – No change
 - a. Passenger equipment in service: #07, #08, #09, Flatcar #23, Coach #5, Baggage Car/RPO #20, Outfit Car #06.
 - b. Passenger equipment out of service: #10, #2 and #05 needing heavy repairs.
 - c. Caboose in service: #3 and #22 are operational.
 - d. Caboose out service: #5 and #6. Caboose #6 needs a 50-year waiver.
4. Track Status – Updated
 - a. Keystone Branch is open. We do have some soft spots that we will be tamping up.
 - b. Adverse Branch is open.
 - c. Museum Branch is the track between the East Ely Depot and the White Pine Public Museum. Our contractor is finishing up the track and it will be open for service shortly.
5. Ridership and Ticket Sales – Updated
 - a. In April we carried 812 passengers, this is a 32% increase compared to 2022. It was our second largest April in 35 years.
 - b. Year to date we have carried 1,471 passengers, this is a 12% increase compared to 2022.
 - c. Since operations began in 1987, we have carried 349,316 passengers.
6. Economic Impact – Data from Travel Nevada Visitor Facts Pony Express 2016-2020
The average non-gaming & gaming daily expenditure per overnight visitor \$140.
Economic impact for April 2023 is $1471 \times 80\% \times 140 = \$90,944$
Economic Impact Year To Date is $1471 \times 80\% \times 140 = \$164,752$

Award Winning Destination

Best Historic Railroad of the West – 2022

Best Adrenaline Rush in Rural Nevada – 2020

Best Museum in Rural Nevada – 2022, 2020, 2017, 2016, 2014, 2013, 2010, 2009, 2008

Trip Advisor Certificate of Excellence – 2022, 2021, 2020, 2019, 2018, 2017, 2016, 2015, 2014

Best Place to Take the Kids in Rural Nevada - 2020, 2019, 2018, 2015, 2014, 2013, 2012, 2011, 2010, 2009, 2008, 2007

These numbers only reflect the economic impact of our train passengers and does not include visitors who did not ride the train.

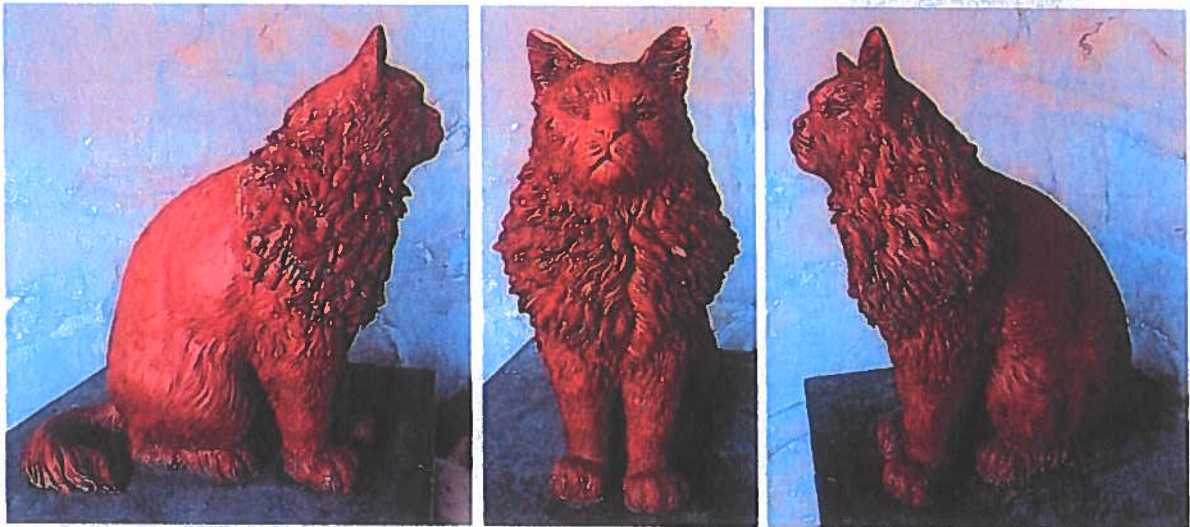
7. Social Media: Our reach on social media continues to expand, in March:

- a. We reached 887,856 people.
- c. We have 130,900-page likes.
- d. 179,307 people follow our page.

8. We are celebrating Dirt, the Boss Shop Cat life on May 28th.

The schedule is:

- 8:00a – Museum Opens
- 8:30a – Dirt Engine House Tour
- 9:30a – Steam Locomotive Cab Tours
- 10:30a - Eulogy at Dirt's Grave Site
- 11:30a - Dirt's Memorial Day Excursion Train
- 12:00p - Dirt Engine House Tour
- 2:00p - Dirt's Memorial Day Excursion Train
- 4:00p – Museum Closes



We are having two bronze statues cast. One will be placed on his gravestone, next to the depot. The other will be at the engine house where he was born.



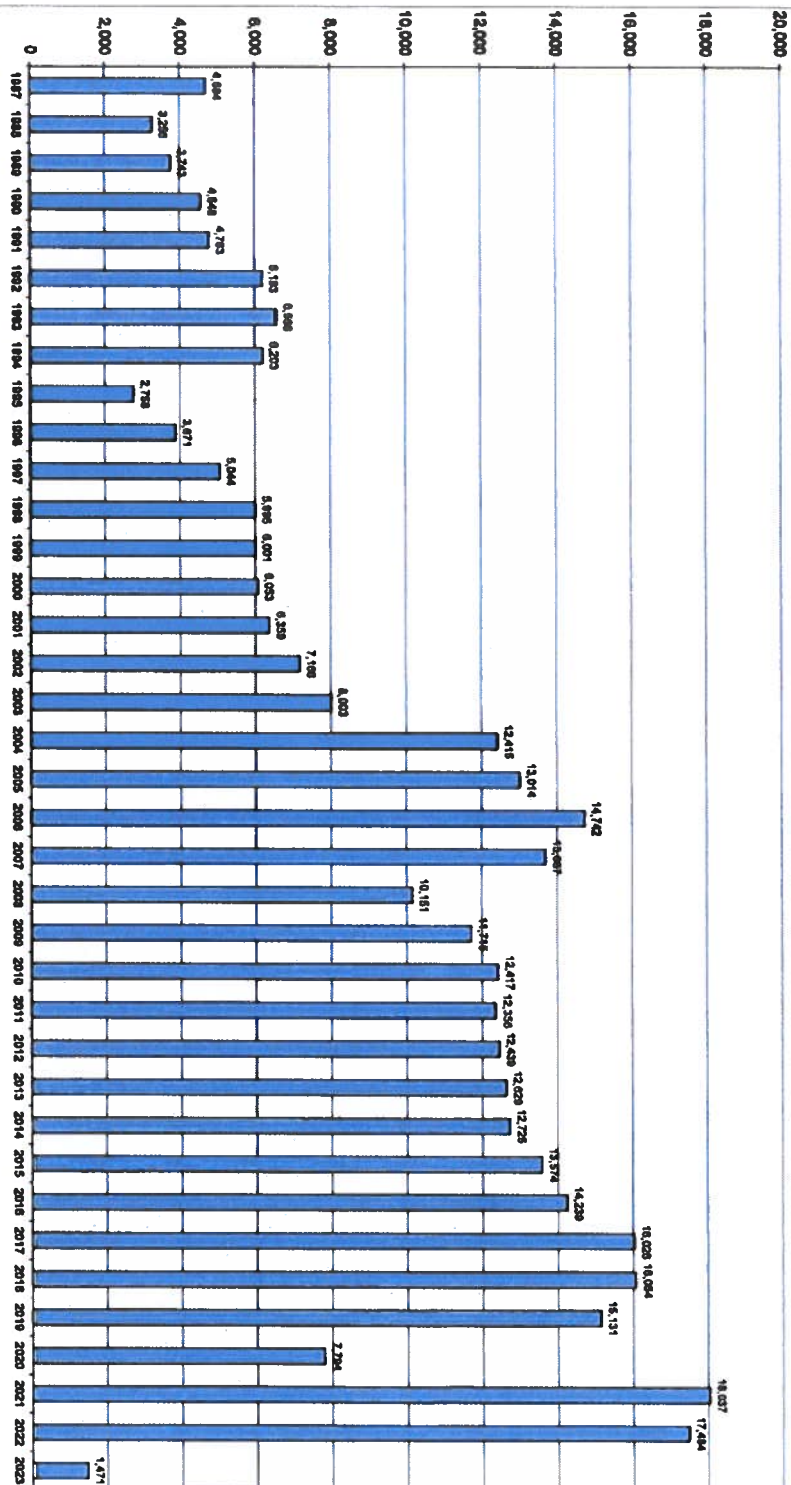
Monthly Ridership 2013 - 2023

Month	2013	2014	2015	2016	2017	2018	2019	2020	2021	2022	2023
Jan	108	184	0	683	1870	1466	1803	1693	1002	1189	690
Feb	92	154	0	946	1845	1514	1718	1235	979	1046	835
Mar	76	170	37	407	1264	1439	2018	1205	1694	1454	2661
Apr	102	940	0	372	835	1389	2387	1178	1315	1378	3009
May	100	310	27	767	1297	1606	2192	1769	1336	1535	4019
Jun	205	317	233	610	1581	2279	2229	1828	1708	1551	3530
Jul	205	320	150	396	1557	2019	2232	1912	1555	1366	2443
Aug	206	332	208	0	35	1179	1638	1340	1568	1289	0
Sep	155	258	221	483	1633	2543	3190	1839	2012	1762	3005
Oct	124	290	235	614	1844	2927	2646	1915	1891	1906	2393
Nov	127	301	221	612	1844	2927	2646	1915	1891	1906	2393
Dec	127	301	221	612	1844	2927	2646	1915	1891	1906	2393

Monthly Ridership 2013 - 2023

Month	2013	2014	2015	2016	2017	2018	2019	2020	2021	2022	2023
Jan	108	384	0	683	1870	3466	1803	1693	1002	1189	690
Feb	92	314	0	946	1845	3514	1718	1235	979	1046	835
Mar	76	270	37	407	1264	1439	2018	1205	1694	1454	901
Apr	102	940	0	372	835	1389	2387	1178	1315	1378	1004
May	100	310	27	767	1297	1606	2192	1769	1336	1535	1008
Jun	205	317	233	610	1581	2279	2229	1828	1708	1851	685
Jul	208	320	150	396	1557	2019	2232	1912	1555	1912	582
Aug	206	332	208	0	35	1179	1638	1340	1568	1289	4
Sep	155	258	221	483	1633	2543	3190	1839	2012	1762	932
Oct	124	290	285	614	1844	2927	2646	1915	1891	1906	649
Nov	127	301	221	612	1844	2927	2646	1915	1891	1906	649
Dec	127	301	221	612	1844	2927	2646	1915	1891	1906	649

Total Ridership **1987 - 2023** **349,316 Passengers** Through April 30, 2023





CERTIFIED PUBLIC
ACCOUNTANTS

Gary K. Keddlington, CPA
Marcus K. Arbuckle, CPA
Steven M. Rowley, CPA

April 25, 2023

To the Honorable Mayor, Members
of City Council, and Management
City of Ely
501 Mill Street
Ely, Nevada 89301

Re: Rent received from Great Basin & Northern Railroad, Inc. in exchange for rights to all Internal Revenue Service Section 45G Credits related to the track jointly owned by the City and Nevada Northern Railroad

We consider the city council to be the body charged with governance and responsible for overseeing the financial reporting process. In this capacity, the city council may commit funds to certain purposes, of which the Section 45G-related money is no different. Based on the fund balance policies of the city, the adoption of an ordinance is required to commit fund balance. Absent the passage of an ordinance from the city council, the question remains as to where to record this money.

The best choice appears to be to record the revenue in the general fund. The general fund was used to pay the expenditures related to the settlement of a lawsuit with S&S Shortline Railroad and this has been the only railroad-related activity the city has encountered since fiscal year 2017.

The alternative choice would be to record the revenue in the city's railroad enterprise fund. The city's financial statements define the railroad fund as used to account for capital projects and other activity related to railroad lines owned by the City and the Nevada Northern Railway Foundation. This fund has not had any activity in it since fiscal year 2017. GASB 34, para. 67 states that an enterprise fund may be used to report any activity for which a fee is charged to external users for goods or services. This revenue does not appear to be a fee charged to external users for goods or services. Given that all activity related to the railroad hasn't been recorded this fund since 2017, it does not appear consistent to record the revenue in this fund either. Furthermore, in our upcoming audit, we will perform procedures related to the reasons for the fund continuing to exist, as no fee appears to be charged to external users for goods or services related to the railroad.

This information is intended solely for the information and use of the honorable mayor, members of city council, and management of the City of Ely, Nevada and is not intended to be, and should not be, used by anyone other than these specified parties.

Very truly yours,

K&C, CPA's

SECTION:

1-6E-1: Office Created

1-6E-2: Purpose

1-6E-3: Appointment

1-6E-4: Term; Removal

1-6E-5: Duties

1-6E-6: Minimum Qualifications

1-6E-7: Working Environment

1-6E-1: OFFICE CREATED:

There is hereby created the office of director of public works, who shall serve at the pleasure of the mayor and city council. (Ord. 539, 12-21-1999)

1-6E-2: PURPOSE:

The director of public works plans, organizes, coordinates and directs the activities, operations and programs of the public works department. The director of public works is under the policy direction of the mayor, city council, and city administrator or clerk. (Ord. 539, 12-21-1999)

1-6E-3: APPOINTMENT:

This position is appointed by the mayor with the advice and consent of the city council. (Ord. 539, 12-21-1999)

1-6E-4: TERM; REMOVAL:

The term of office continues until the next city election following the appointment and until a successor is appointed and qualified, unless sooner removed by the mayor with the concurrence of a majority of members of the city council, unless the term is ended by removal from office as provided in Nevada Revised Statutes 266.415 and in event of a mayoral veto, as provided in Nevada Revised Statutes 266.200. (Ord. 662, 11-14-2013)

1-6E-5: DUTIES:

The director of public works shall perform the following duties: (Ord. 539, 12-21-1999)

A. Essential Duties And Responsibilities: Functions as a department head responsible for the overall management of the public works department and assigned personnel and programs. The director may function, at the discretion of the mayor and city council, as parks and maintenance director and cemetery sexton, if appointed as otherwise required by this code, as the case may be. (Ord. 665, 2-13-2014)

B. Description Of Duties: The following are used as a partial description and are not restrictive to duties required:

1. Plans, organizes, evaluates and directs the activities, programs and operations of the public works department in the maintenance, construction and repair of streets, cemetery, parks, equipment, public buildings and utilities.

2. Coordinates the planning, engineering and management of the city's capital improvement programs in accordance with city policies, regulations and requirements.

3. Coordinates city engineering activities and projects with appropriate federal, state, county and related agencies.
4. Confers with the city administrator or clerk on plans, programs and activities of the public works department.
5. Develops plans for future operation and projected needs of the public works department.
6. Organizes and directs the selection, assignment, utilization, training, evaluation and discipline of personnel of the public works department.
7. Prepares the preliminary department's annual budget for submittal to the city treasurer and maintains actual expenditures within the allocated limits.
8. Generates a performance report for all city council and utilities board regular meetings regarding the work activities and the workload of the public works department.
9. Responds to public concerns, problems and complaints regarding the public works department projects and operations.
10. Attends professional conferences and meetings and keeps informed on legal, technical and administrative trends in the field of public works.
11. Confers with officials of federal, state, and local agencies and industry regarding public works matters of mutual interest for establishment of cooperative agreements and contracts.
12. Prepares written reports and correspondence as necessary.
13. Performs related duties as may be assigned. (Ord. 539, 12-21-1999)

1-6E-6: MINIMUM QUALIFICATIONS:

A. Qualifications:

1. Minimum Qualifications Of Education, State Licensing, And Experience: Possession of baccalaureate degree from an accredited college with a major in public administration, civil engineering or a closely-related field or five (5) years' experience in public works administration.
2. Desired Qualifications: Those persons who hold and possess a Nevada license to operate all of the utilities within the city's portfolio of utility operations that are provided to the citizens of the city of Ely. (Ord. 670, 1-8-2015)

B. Knowledge And Abilities:

1. Knowledge of: philosophies, techniques, and principles of public works services and organizations; methods, materials and techniques used in the maintenance, construction and repair of streets, parks, equipment, public buildings and city utilities; safety procedures utilized in public works maintenance, construction, and repair; public administration, budgeting, training, personnel management and organizational techniques; utility practices and management; techniques and principles of city engineering.
2. Ability to: analyze, evaluate, develop, coordinate and direct public works programs, projects and operation; plan, coordinate, train, evaluate and direct the work of others; maintain effective working relationships with other officials, subordinates and the public; communicate effectively both verbally and in writing.

C. Driver's License: Possession of a valid Nevada driver's license for equipment to be operated.

D. Physical Requirements:

1. Strength, dexterity, coordination and vision to use keyboard and video display terminal for prolonged periods. Dexterity and coordination to handle files and single pieces of paper; occasional

lifting of items weighing up to twenty five (25) pounds, files, stacks of paper, reference and other materials. Moving from place to place within the office and some reaching for items above and below desk level. Some independent travel by car.

2. Vision to read reports, financial data, and maps; strength and stamina to drive a vehicle, including travel over rough roads, and to perform occasional lifting of light and heavy objects, to walk over uneven surfaces; bending, stooping, climbing, crawling, squatting, and periods of standing. (Ord. 539, 12-21-1999)

1-6E-7: WORKING ENVIRONMENT:

The public works administrator works both inside and outside. Outside work occurs on a frequent basis and requires exposure to dust, fumes, or high noise levels and extreme weather conditions. (Ord. 539, 12-21-1999)

Resolution Number 2022-09

RESOLUTION TO AMEND APPOINTED OFFICIAL SALARIES

WHEREAS, the Ely City Council has the authority to pass resolutions that are not repugnant to the constitutions of the United States or of the State of Nevada or to the provisions of Chapter 266 of the Nevada Revised Statutes, necessary for good municipal government and the management of the city affairs pursuant to Ely City Code 1-5-4(B) and N.R.S. 266.105;

WHEREAS, pursuant to Nevada Revised Statute 266.450, all appointed officers are entitled to receive such compensation as may be fixed by ordinance;

WHEREAS, the salary ranges have not been changed since 2007;

WHEREAS, higher salary ranges attract qualified professionals to better serve the Citizens of Ely and the administration of the City; and

NOW, THEREFORE, in the best interest of the City of Ely and its citizens, the City Council of the City of Ely, State of Nevada, hereby resolves and orders, by way of this resolution, that the following appointed official salaries shall be adopted:

Job Title	Minimum - Maximum Per Year
Job Title	Minimum - Maximum Per Year
City Clerk	\$60,000.00 - \$90,000.00
City Treasurer	\$60,000.00 - \$90,000.00
City Treasurer/HR Director	\$60,000.00 - \$100,000.00
City Attorney	\$80,000.00 - \$138,000.00
City Administrator/Manager	\$60,000.00 - \$90,000.00
Director of Public Works	\$60,000.00 - \$90,000.00
City Engineer	\$65,000.00 - \$110,000.00
City Clerk/Treasurer	\$60,000.00 - \$100,000.00
Municipal Judge	\$20,000.00 - \$35,000.00
Fire Chief	\$80,000.00 - \$115,000.00
Human Resources Director	\$60,000.00 - \$90,000.00
Building Official	\$60,000.00 - \$110,000.00

Code be suspended until an ordinance amending the provision is passed and made effective:

"These salary ranges may be evaluated and changed from time to time by resolution, but the compensation of any such officers shall not be increased or diminished to take effect during the time for which the officer was appointed"

AYES: 5

NAYS: 0

ABSTAIN: 0

INTRODUCED AND PASSED this 18th day of August, 2022

APPROVED:

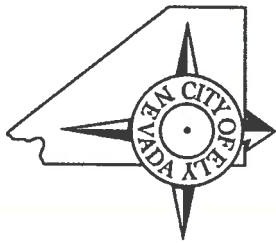


NATHAN ROBERTSON, MAYOR

ATTESTED TO BY:



JENNIFER LEE, CITY CLERK



CITY OF ELY

501 Mill Street Ely, Nevada 89301
City Hall (775) 289-2430
Cityofelynv.gov

City of Ely Sewer Lift Station submersible pumps Bid opening & Required Documents Checklist

Bid Item Check List		Mountainland Supply Company	
2 submersible pumps		Yes	
4" inch discharge		Yes	
Power Supply – 460-volt 3 phase 60 HZ		Yes	
NPSH – 8 inches to 10 ft.		Yes	
Capacity – 450 GPM @205 ft. TDH (230-240 TDH)		Yes	
Motor H.P. – 75 (minimum)		Yes	
Overall Project Bid Price			\$130,932.08

Bid Tabulation in Order of Lowest Overall Bid Price to the Highest

The City of Ely is an equal opportunity provider and employer.

**MOUNTAINLAND**

SUPPLY COMPANY

MLPC MOUNTAINLAND PUMP AND DRILLING
294 W 500 S
Nephi, UT 84648
435-610-5977

**Quotation**

EXPIRATION DATE	QUOTE NUMBER
01/03/2023	S105134740
REMIT TO: MLSC MOUNTAINLAND SUPPLY COMPANY PO Box 127 OREM, UT 84059-0127	PAGE NO. 1 of 4

QUOTE TO:

SHIP TO:

CITY OF ELY
501 MILL ST
ELY, NV 89301

CITY OF ELY
501 MILL ST
ELY, NV 89301

CUSTOMER NUMBER	CUSTOMER PO NUMBER	JOB NAME / RELEASE NUMBER	SALESPERSON		
187692	BID-ELY CITY LIFT STATION		BRIAN GREIG		
WRITER		SHIP VIA	TERMS	SHIP DATE	FREIGHT ALLOWED
BRIAN GREIG		OT CEDAR CITY		06/04/2023	No
ORDER QTY	DESCRIPTION		UNIT PRICE	EXT PRICE	
	<div>SHIPPING INSTRUCTIONS</div> <div>FOB FACTORY</div>				
2ea	Deming 134667, RELAY, MOISTURE/TEMP SPECIAL ORDER RETURN POLICY APPLIES		779.640/ea	1559.28	
2ea	P/N # 128281, BAF 4x4, Assembly SPECIAL ORDER RETURN POLICY APPLIES		1773.333/ea	3546.67	
2ea	P/N# 131307 BAF 4"x 4" Intermediate Assembly SPECIAL ORDER RETURN POLICY APPLIES		501.333/ea	1002.67	
4ea	2"X20' SS304 PIPE RAILS GUIDES SPECIAL ORDER RETURN POLICY APPLIES		357.143/ea	1428.57	
75ea	SUNCOR P/N S0603-0008 5/16" GRADE 50 LIFTING CHAIN (S5) X Z 316L STAINLESS STEEL 2700# (PER FOOT) SPECIAL ORDER RETURN POLICY APPLIES		22.114/ea	1658.57	
6ea	SUNCOR P/N S0452-0008 5/16" CLEVIS HOOK SPECIAL ORDER RETURN POLICY APPLIES		38.029/ea	228.17	
2ea	FLOMATIC BALL CHECK VALVES P/N#3145 408 2 4" FLANGED SPECIAL ORDER RETURN POLICY APPLIES		967.757/ea	1935.51	
** Continued on Next Page *			Bid Total		



MOUNTAINLAND

SUPPLY COMPANY

MLPC MOUNTAINLAND PUMP AND DRILLING

294 W 500 S

Nephi, UT 84648

435-610-5977



Quotation

EXPIRATION DATE	QUOTE NUMBER
01/03/2023	S105134740
REMIT TO: MLSC MOUNTAINLAND SUPPLY COMPANY PO Box 127 OREM, UT 84059-0127	
PAGE NO. 2 of 4	

QUOTE TO:

SHIP TO:

CITY OF ELY
501 MILL ST
ELY, NV 89301

CITY OF ELY
501 MILL ST
ELY, NV 89301

CUSTOMER NUMBER	CUSTOMER PO NUMBER	JOB NAME / RELEASE NUMBER	SALESPERSON		
187692	BID-ELY CITY LIFT STATION		BRIAN GREIG		
WRITER		SHIP VIA	TERMS	SHIP DATE	FREIGHT ALLOWED
BRIAN GREIG		OT CEDAR CITY		06/04/2023	No
ORDER QTY	DESCRIPTION			UNIT PRICE	EXT PRICE
2ea	FLOMATIC PLUG VALVE P/N#540000070 #54-0 4" FLANGED SPECIAL ORDER RETURN POLICY APPLIES			1247.400/ea	2494.80
1ea	BARNES 059720E - RACK,CABLE,SS SPECIAL ORDER RETURN POLICY APPLIES			775.200/ea	775.20
2ea	DEMING 142806C-MBM - Deming 7366-414-67-31N, 4 inch discharge, hydraulic series 4DH, 75 HP, 1750 rpm, 460 volts, 3 phase, impeller trimmed to 355mm, Impeller Material DuctileIron, Explosion Proof Y, Sil Car / Sil Car Upper, Sil Car / Sil Car Lower seal , CertTest: Megger, SPECIAL ORDER RETURN POLICY APPLIES			44498.640/ea	88997.28
2ea	DEMING 138319AXF - ASSY,CORD,2GA,50',SH,LG SPECIAL ORDER RETURN POLICY APPLIES			3934.667/ea	7869.33
4ea	BARNES 124522-50 INTRINSICALLY SAFE FLOAT W/50' CORD SPECIAL ORDER RETURN POLICY APPLIES			114.000/ea	456.00
4ea	CRANE 125170 - WEIGHT FLOAT CABLE ADJ SPECIAL ORDER RETURN POLICY APPLIES			29.857/ea	119.43
** Continued on Next Page *				Bid Total	

**MOUNTAINLAND**

SUPPLY COMPANY

MLPC MOUNTAINLAND PUMP AND DRILLING
294 W 500 S
Nephi, UT 84648
435-610-5977

**Quotation**

EXPIRATION DATE	QUOTE NUMBER
01/03/2023	S105134740
REMIT TO: MLSC MOUNTAINLAND SUPPLY COMPANY PO Box 127 OREM, UT 84059-0127	PAGE NO. 3 of 4

QUOTE TO:

CITY OF ELY
501 MILL ST
ELY, NV 89301

SHIP TO:

CITY OF ELY
501 MILL ST
ELY, NV 89301

CUSTOMER NUMBER	CUSTOMER PO NUMBER	JOB NAME / RELEASE NUMBER	SALESPERSON		
187692	BID-ELY CITY LIFT STATION		BRIAN GREIG		
WRITER		SHIP VIA	TERMS	SHIP DATE	FREIGHT ALLOWED
BRIAN GREIG		OT CEDAR CITY		06/04/2023	No
ORDER QTY	DESCRIPTION		UNIT PRICE	EXT PRICE	
1ea	SEE WATER CONTROL PANEL P/N CP2449 Description: Duplex three phase float operated control system. Features: NEMA 3R rated painted steel enclosure with a lockable latch and dead-front inner door PLC for control logic IEC rated motor starter with adjustable overload Fused step-down transformer: 208/240/480V-3Ø Duplex provides automatic alternation and high demand two-pump operation Pump control visible indicators: 22mm Pump #1 hand-off-auto (H.O.A.) switch, Pump #2 hand-off-auto (H.O.A.) switch, green pump run lights, red pump fault lights, and power on light Alarm visible indicators: Red beacon alarm light, and seal fail leak alarm test and silence buttons Seal Fail pump protection Intrinsically Safe Four float operation: Off, Lead, Lag, High-Level UL 508A listed Two-year		18860.600/ea	18860.60	
** Continued on Next Page *			Bid Total		



MOUNTAINLAND

SUPPLY COMPANY

MLPC MOUNTAINLAND PUMP AND DRILLING
294 W 500 S
Nephi, UT 84648
435-610-5977



Quotation

EXPIRATION DATE	QUOTE NUMBER
01/03/2023	S105134740
REMIT TO: MLSC MOUNTAINLAND SUPPLY COMPANY PO Box 127 OREM, UT 84059-0127	PAGE NO. 4 of 4

QUOTE TO:

CITY OF ELY
501 MILL ST
ELY, NV 89301

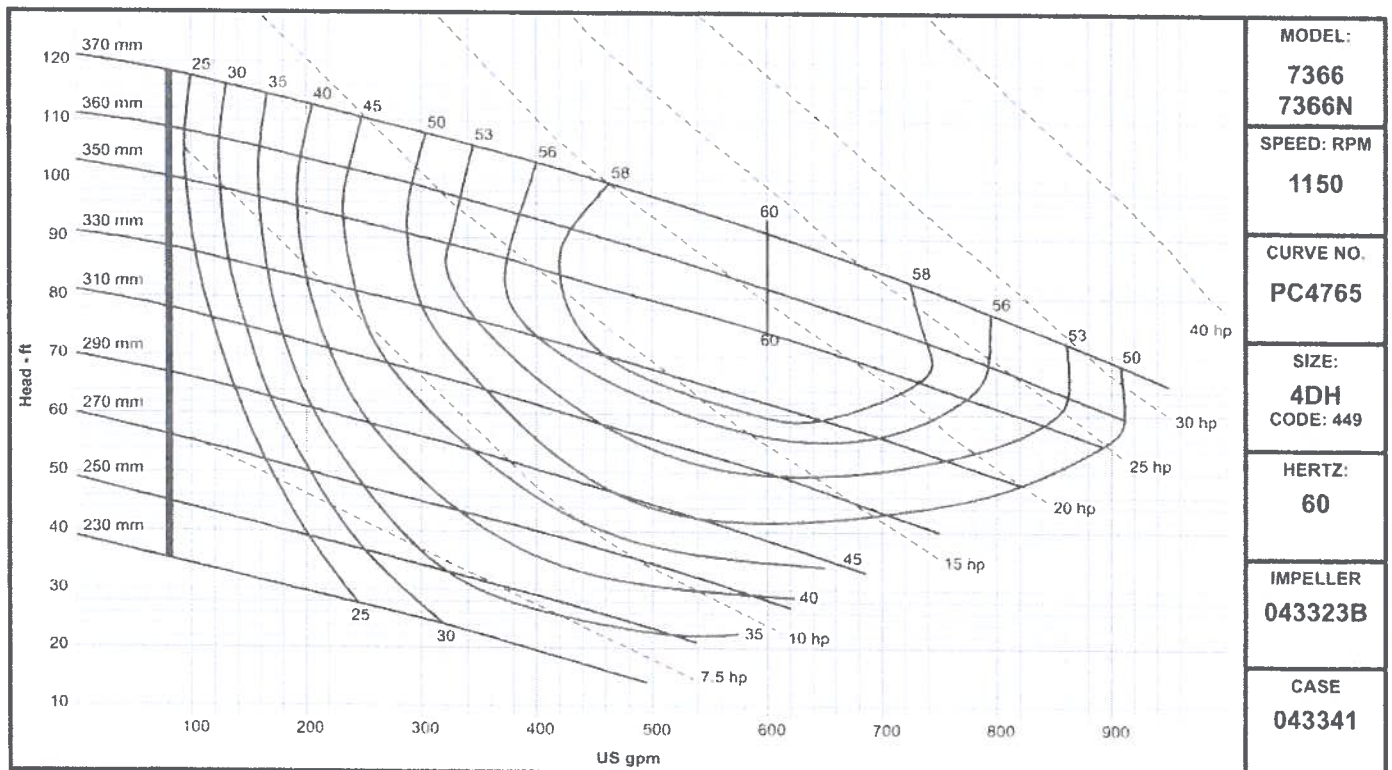
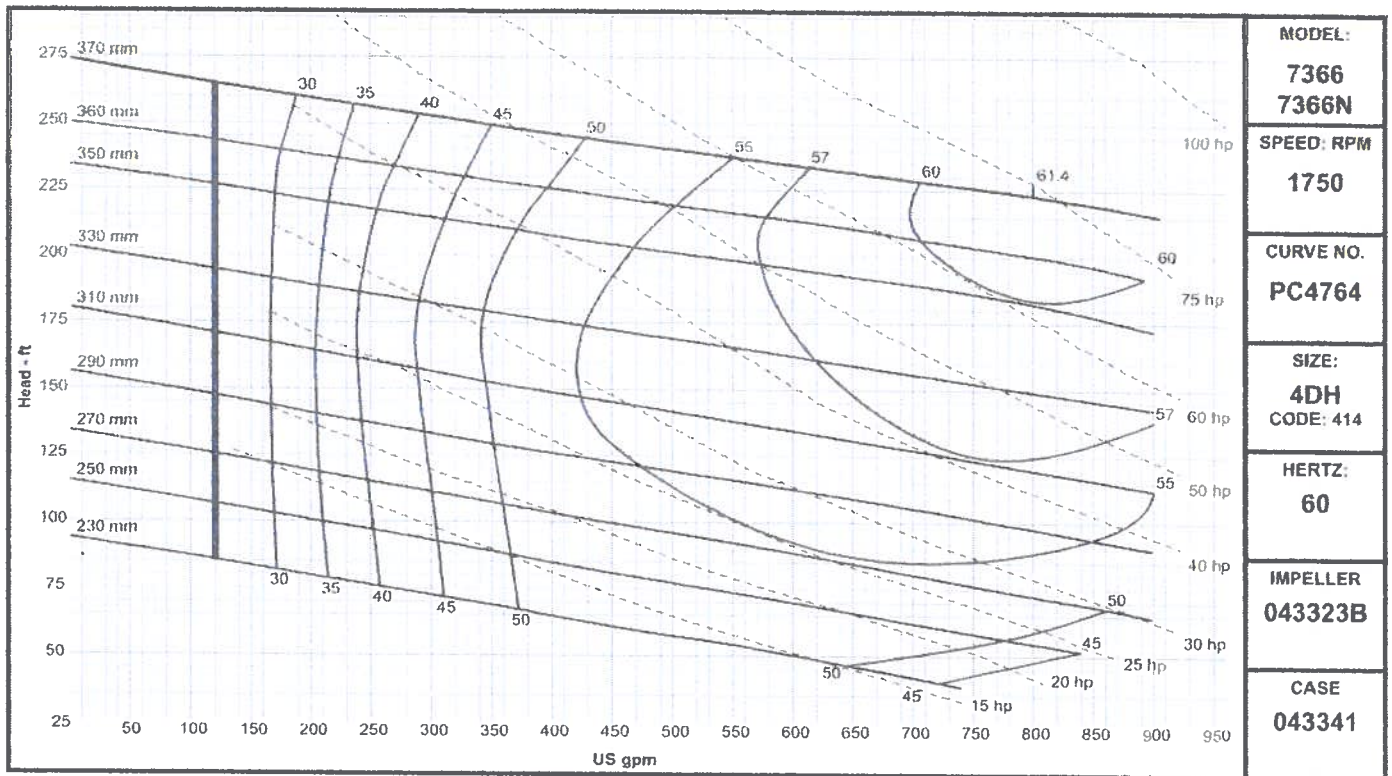
SHIP TO:

CITY OF ELY
501 MILL ST
ELY, NV 89301

CUSTOMER NUMBER	CUSTOMER PO NUMBER	JOB NAME / RELEASE NUMBER	SALESPERSON		
187692	BID-ELY CITY LIFT STATION		BRIAN GREIG		
WRITER		SHIP VIA	TERMS	SHIP DATE	FREIGHT ALLOWED
BRIAN GREIG		OT CEDAR CITY		06/04/2023	No
ORDER QTY	DESCRIPTION			UNIT PRICE	EXT PRICE
	limited warranty SPECIAL ORDER RETURN POLICY APPLIES				
Bid Total does not include tax or freight. All prices herein supercede all prior quotes and are subject to change without prior notice. No guarantee is made as to the accuracy of the quantities listed.				Bid Total	130932.08

Due to the impact of COVID-19 supply chain interruptions, trucking shortages, and resulting price increases, this pricing is based on material in stock at time of quotation. Please verify all quantities and part numbers prior to placing your order.

Demersible Chopper Pumps



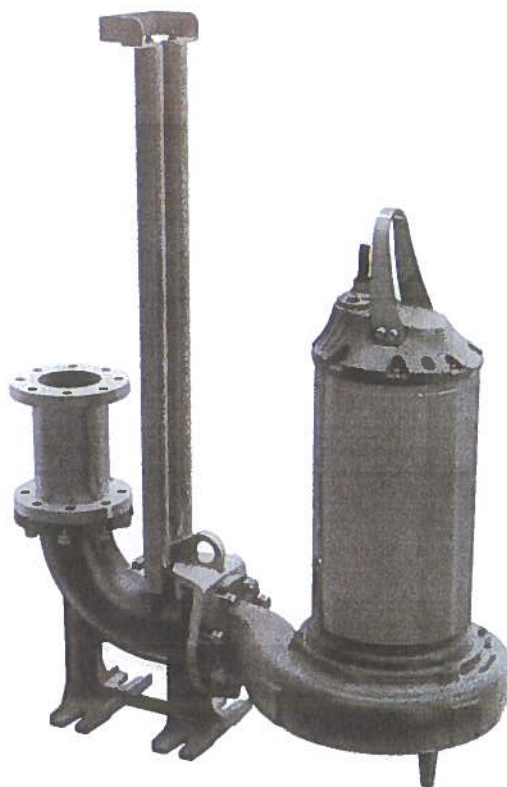
Break Away Fitting

Submersible Wet/Dry Pit Accessories

DEMING

envie³

www.cranepumps.com



Break Away Fitting

MODEL	P/N	DESCRIPTION
BAF 3x3	134202	Standard & Non-Sparking
BAF 4x4	128281	Standard & Non-Sparking
BAF 4x6	128280	Standard & Non-Sparking
BAF 6x6	139202	Standard & Non-Sparking
BAF 8x8	139203	Standard Only
	139203-NS	Non-Sparking
BAF 10x10	139204	Standard Only
	139204-NS	Non-Sparking

Specifications:

The Break Away Fitting is designed to allow the submersible pump to be installed in a wet well and removed without requiring personnel to enter the wet well. The assembly includes the base elbow, slide, upper bracket and hardware. Intermediate brackets must be ordered separately. Guide rails must be provided by others.

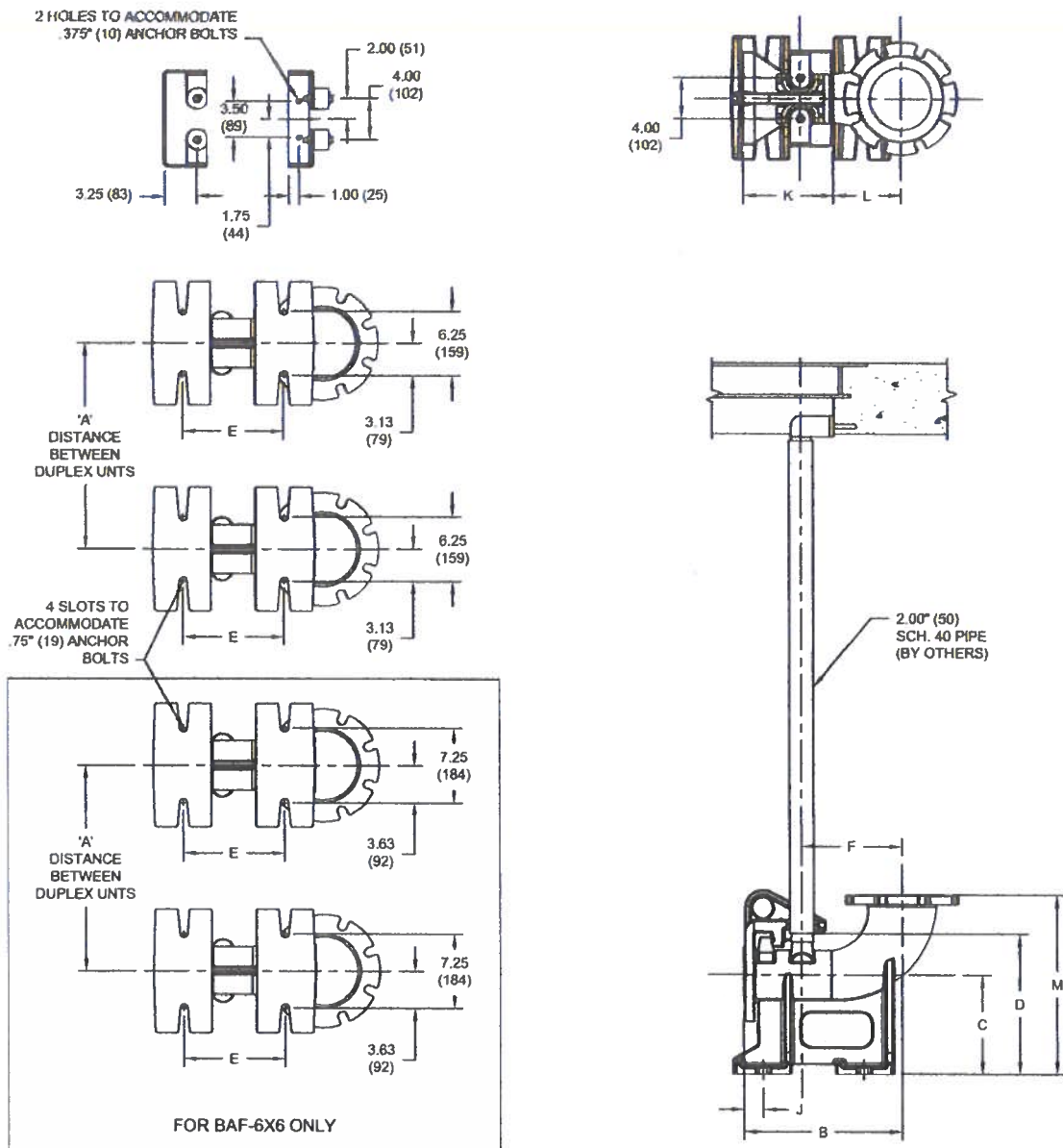
SECTION
PAGE
DATE

CRANE

A Crane Co. Company

PUMPS & SYSTEMS

USA: (937) 778-8947 • Canada: (905) 457-6223 • International: (937) 615-3598



DIMENSIONS IN INCHES (MM)

MODEL NO.	PART NO.	A	B	C	D	E	F	J	K	L	M
BAF - 3x3	134202	22.20 (564)	12.10 (308)	8.00 (203)	10.63 (270)	8.50 (216)	6.44 (164)	1.48 (38)	8.76 (223)	3.19 (81)	13.38 (340)
BAF - 4x4	128281	26.13 (664)	15.50 (394)	9.62 (244)	13.62 (346)	9.84 (250)	9.80 (249)	1.90 (49)	8.82 (224)	6.55 (167)	17.43 (443)
BAF - 4x6	128280	32.13 (816)									
BAF - 6x6	139202	32.13 (816)	15.87 (403)	10.00 (254)	14.13 (359)	11.00 (280)	10.08 (256)	2.29 (58)	9.04 (230)	6.82 (173)	19.92 (506)

Size 4DH (Dual Vane)

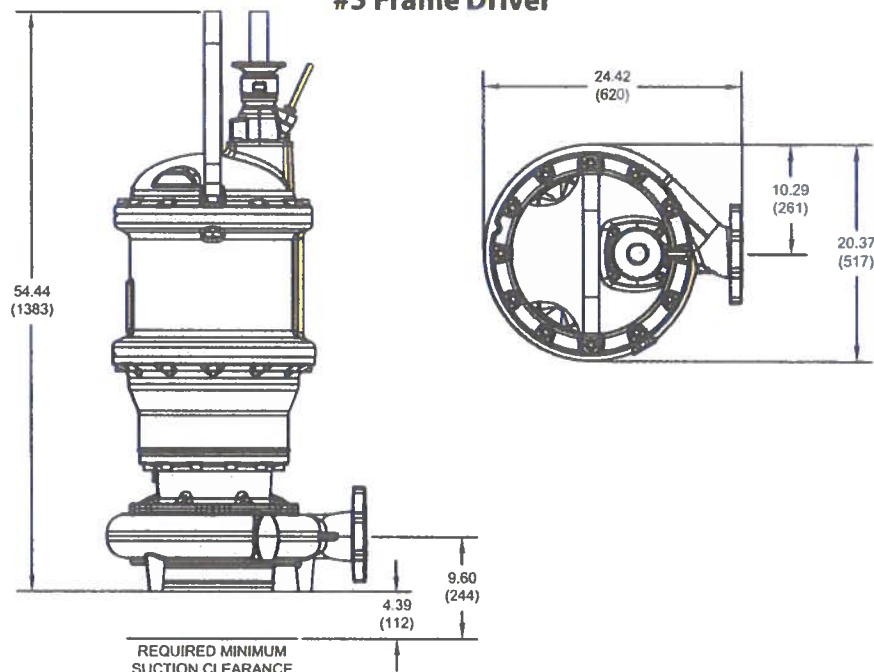
7366*-414

DEMING®

www.cranepumps.com

Demersible Chopper Pumps

#5 Frame Driver



inches
(mm)

Optional Leg Kit - p/n 125506B



Model No.	Imp. Dia. inches (mm)	HP	Volt	PH	Hz	RPM	NEMA Start Code	Full Load Amps	S.F.	S.F. Amps	Locked Rotor Amps	Cord P/N ▲	Cord Size
7366*-414-67-32N	14.17 (360)	75	460	3	60	1750	G	108.4	1.15	120.7	578.0	138319	2/4 - 18/4
7366*-414-82-32N	14.17 (360)	75	575	3	60	1750	G	86.7	1.15	96.6	462.4	138319	2/4 - 18/4
7366*-414-68-32N	14.57 (370)	100	460	3	60	1750	E	136.6	1.15	155.3	578.0	138319	2/4 - 18/4
7366*-414-83-32N	14.57 (370)	100	575	3	60	1750	E	109.2	1.15	124.2	462.4	138319	2/4 - 18/4

* FOR NON-EXPLOSION PROOF (STANDARD) MODELS, USE FIGURE NUMBER 7366N.

▲ CORD SOLD SEPARATELY.

IMPORTANT !

- 1.) MOISTURE AND TEMPERATURE SENSORS MUST BE CONNECTED TO VALIDATE THE CSA LISTING.
- 2.) A SPECIAL MOISTURE SENSOR RELAY IS REQUIRED IN THE CONTROL PANEL FOR PROPER OPERATION OF THE MOISTURE SENSORS CONTACT CP&S FOR INFORMATION CONCERNING MOISTURE SENSING RELAYS FOR CUSTOMER SUPPLIED CONTROL PANELS.
- 3.) THESE PUMPS ARE CSA LISTED FOR PUMPING WATER AND WASTEWATER. DO NOT USE TO PUMP FLAMMABLE LIQUIDS. NOT SUITABLE FOR ENVIRONMENTS CONTAINING GASOLINE OR HEXANE.
- 4.) INSTALLATIONS SUCH AS DECORATIVE FOUNTAINS OR WATER FEATURES PROVIDED FOR VISUAL ENJOYMENT MUST BE INSTALLED IN ACCORDANCE WITH THE NATIONAL ELECTRIC CODE ANSI/NFPA 70 AND/OR THE AUTHORITY HAVING JURISDICTION. THIS PUMP IS NOT INTENDED FOR USE IN SWIMMING POOLS, RECREATIONAL WATER PARKS, OR INSTALLATIONS IN WHICH HUMAN CONTACT WITH PUMPED MEDIA IS A COMMON OCCURRENCE.
- 5.) A NON-SPARKING BREAKAWAY FITTING MUST BE USED TO VALIDATE THE EXPLOSION PROOF LISTING.
- 6.) WINDING RESISTANCE $\pm 7.5\%$. WINDING RESISTANCE MEASURED IN OHMS @ 25°C (BETWEEN LINES) AT MOTOR LEADS.
- 7.) PUMP RATED FOR OPERATION AT $\pm 10\%$ VOLTAGE AT MOTOR.
- 8.) CORD SUFFIX: XF - 50 FEET, XJ - 75 FEET, OR XL - 100 FEET. CORD SOLD SEPARATELY.
- 9.) ALL EXPLOSION PROOF PUMPS AND MOTORS ARE CSA EXPLOSION-PROOF TO CLASS I DIVISION 1 GROUPS C&D T4 RATING

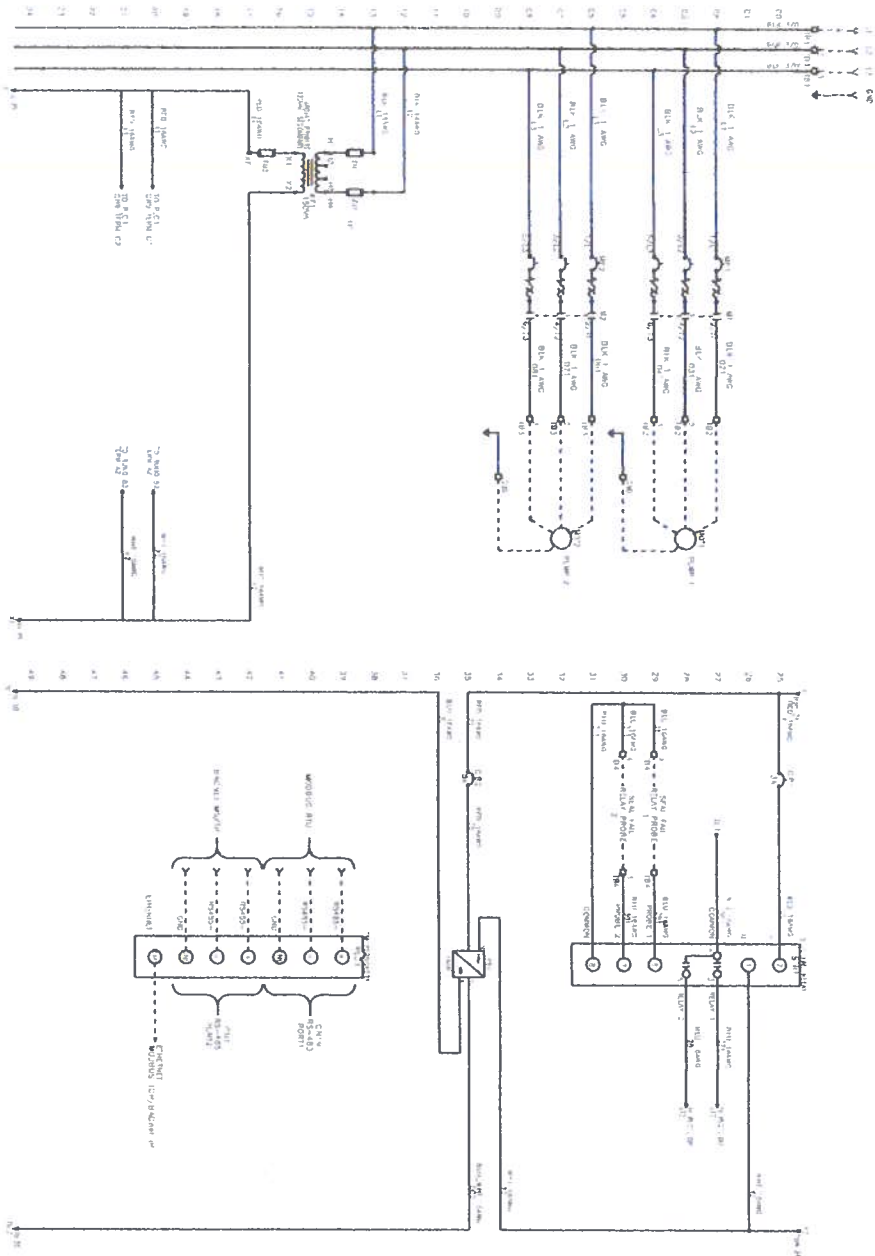
SECTION 42B
PAGE 32
DATE 6/19

CRANE®

A Crane Co. Company

PUMPS & SYSTEMS

USA: (937) 778-8947 • Canada: (905) 457-6223 • International: (937) 615-3598



WIRING INSTRUCTIONS

CONNECT FUSE BLOCK UNDER THE APPROPRIATE TERMINAL BLOCK. SEE BELOW FOR CONNECTIONS.

FOR 240V OPERATION, CONNECT 140 VOLT INPUT WIRE TO TRANSFORMER TAP NO. 1.

FOR 480V OPERATION, CONNECT TO FUSE INPUT WIRE & TRANSFORMER TAP NO. 4.

FOR 600V OPERATION, CONNECT TO FUSE INPUT WIRE & TRANSFORMER TAP NO. 4.

DASHED LINE INDICATES FIELD WIRING.

USE COPPER CONDUITS ONLY.

TEMPERATURE RATING OF CONDUITS IS 10 BE, 50C (140F) FOR UNDER 100A, 75C (167F) FOR OVER 100A.

BRANCH CIRCUIT PROTECTION SHALL BE PROVIDED BY THE INSTALLER. MUST BE SIZED ACCORDING TO FUSE/MOTOR MANUFACTURING SPECIFICATIONS.

VERIFY CORRECT OPERATION OF CONTROL PANEL AFTER INSTALLATION IS COMPLETE.

FIELD WIRING TORQUE SPECS.		UL #	E354616	E-344N BY: MSS		DATE: 05/03/23
TERMINAL BLOCK UT 1	5 IN-LB	TOTAL FUSE	194A	APPROVED BY: DO	05/04/23	<div>THIS DRAWING CONTAINS PROPRIETARY INFORMATION AND SHALL NOT BE USED OR DISCLOSED WITHOUT PRIOR WRITTEN AUTHORIZATION.</div>
TERMINAL BLOCK UT 2	7 IN-LB	ENCLOSURE TYPE:	NEMA 3R	TITLE: CP2449		
TERMINAL BLOCK UT 3	15 IN-LB	PHASE:	3 PH			
TERMINAL BLOCK UT 4	15 IN-LB	VOLTAGE:	480 VAC	CONTROL PANEL SCHEMATIC		
TERMINAL BLOCK UT 5	25 IN-LB	TRANSFORMER HI: H1 & H2	10 IN-LB			
TERMINAL BLOCK UT 6	30 IN-LB	TRANSFORMER LO: L1 & L2	10 IN-LB	CP2449		
TERMINAL BLOCK UT 7	30 IN-LB	TRANSFORMER TAP NO. 1	10 IN-LB			
TERMINAL BLOCK UT 8	30 IN-LB	TRANSFORMER TAP NO. 4	10 IN-LB	CP2449		
TERMINAL BLOCK UT 9	30 IN-LB	TRANSFORMER TAP NO. 4	10 IN-LB			
TERMINAL BLOCK UT 10	30 IN-LB	TRANSFORMER TAP NO. 4	10 IN-LB	CP2449		
TERMINAL BLOCK UT 11	30 IN-LB	TRANSFORMER TAP NO. 4	10 IN-LB			
TERMINAL BLOCK UT 12	30 IN-LB	TRANSFORMER TAP NO. 4	10 IN-LB	CP2449		
TERMINAL BLOCK UT 13	30 IN-LB	TRANSFORMER TAP NO. 4	10 IN-LB			
TERMINAL BLOCK UT 14	30 IN-LB	TRANSFORMER TAP NO. 4	10 IN-LB	CP2449		
TERMINAL BLOCK UT 15	30 IN-LB	TRANSFORMER TAP NO. 4	10 IN-LB			
TERMINAL BLOCK UT 16	30 IN-LB	TRANSFORMER TAP NO. 4	10 IN-LB	CP2449		
TERMINAL BLOCK UT 17	30 IN-LB	TRANSFORMER TAP NO. 4	10 IN-LB			
TERMINAL BLOCK UT 18	30 IN-LB	TRANSFORMER TAP NO. 4	10 IN-LB	CP2449		
TERMINAL BLOCK UT 19	30 IN-LB	TRANSFORMER TAP NO. 4	10 IN-LB			
TERMINAL BLOCK UT 20	30 IN-LB	TRANSFORMER TAP NO. 4	10 IN-LB	CP2449		
TERMINAL BLOCK UT 21	30 IN-LB	TRANSFORMER TAP NO. 4	10 IN-LB			
TERMINAL BLOCK UT 22	30 IN-LB	TRANSFORMER TAP NO. 4	10 IN-LB	CP2449		
TERMINAL BLOCK UT 23	30 IN-LB	TRANSFORMER TAP NO. 4	10 IN-LB			
TERMINAL BLOCK UT 24	30 IN-LB	TRANSFORMER TAP NO. 4	10 IN-LB	CP2449		
TERMINAL BLOCK UT 25	30 IN-LB	TRANSFORMER TAP NO. 4	10 IN-LB			
TERMINAL BLOCK UT 26	30 IN-LB	TRANSFORMER TAP NO. 4	10 IN-LB	CP2449		
TERMINAL BLOCK UT 27	30 IN-LB	TRANSFORMER TAP NO. 4	10 IN-LB			
TERMINAL BLOCK UT 28	30 IN-LB	TRANSFORMER TAP NO. 4	10 IN-LB	CP2449		
TERMINAL BLOCK UT 29	30 IN-LB	TRANSFORMER TAP NO. 4	10 IN-LB			
TERMINAL BLOCK UT 30	30 IN-LB	TRANSFORMER TAP NO. 4	10 IN-LB	CP2449		
TERMINAL BLOCK UT 31	30 IN-LB	TRANSFORMER TAP NO. 4	10 IN-LB			
TERMINAL BLOCK UT 32	30 IN-LB	TRANSFORMER TAP NO. 4	10 IN-LB	CP2449		
TERMINAL BLOCK UT 33	30 IN-LB	TRANSFORMER TAP NO. 4	10 IN-LB			
TERMINAL BLOCK UT 34	30 IN-LB	TRANSFORMER TAP NO. 4	10 IN-LB	CP2449		
TERMINAL BLOCK UT 35	30 IN-LB	TRANSFORMER TAP NO. 4	10 IN-LB			

SEE WATER

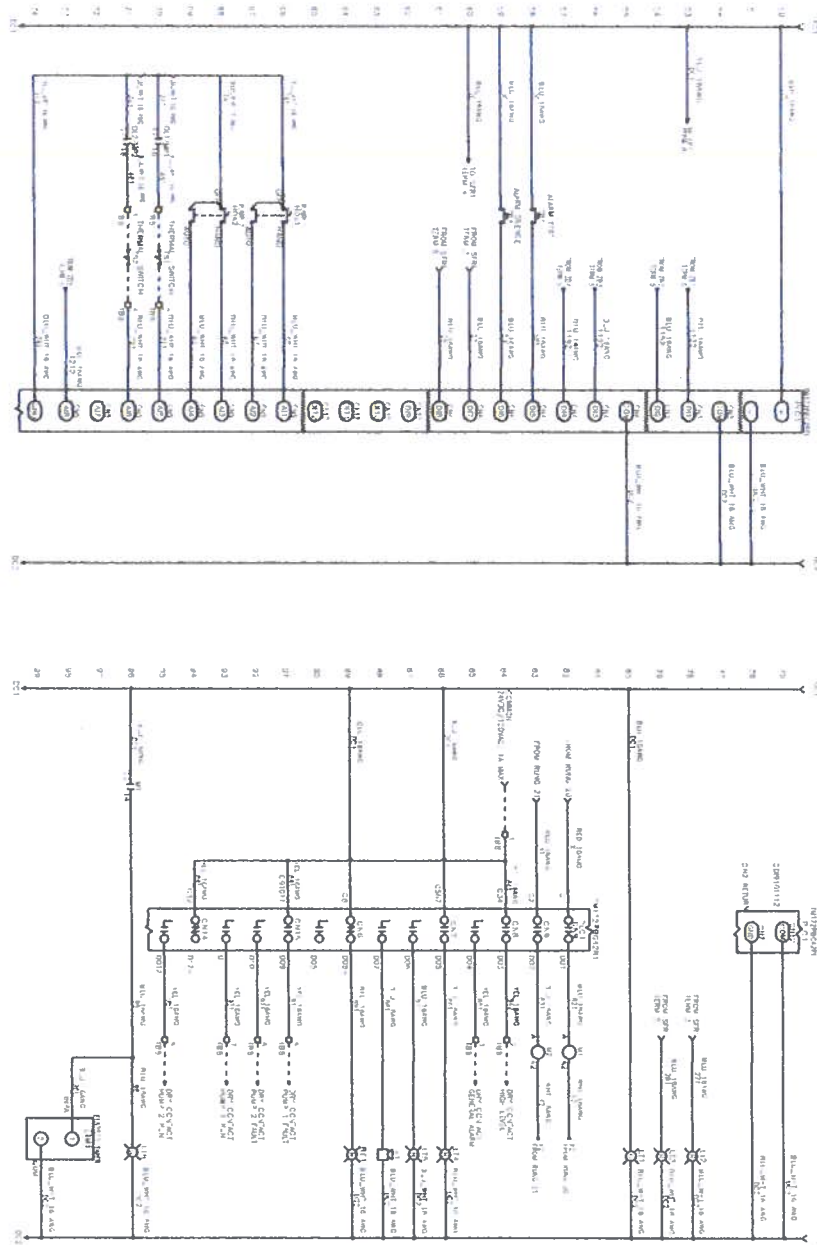
CP2449

CONTROL PANEL SCHEMATIC

SIZE DWG NO. 4339 PAR. NO. CP2449

SCALE NONE SHEET 1 OF 3

SIZE	DWG NO.	PART NO.	REV
B	4339		
SCALE	NONE	SHEET	1 OF 3



```

MULTI-APD TRANSFORMER:
CONNECT FACTORY TAPPED WIRE TO APPROPRIATE
TRANSFORMER VOLTAGE TAP SEE BELOW FOR
CONNECTIONS.


FOR 20V OPERATING, CONNECT TO FUSE WHOLE HT &
FOR 25V OPERATING, CONNECT TO FUSE WHOLE HT &
TO RESISTOR TAP 10%
FOR 30V OPERATING, CONNECT TO FUSE WHOLE HT &
FOR 40V OPERATION, CONNECT TO FUSE WHOLE HT &
FOR TRANSFORMER TAP 80%

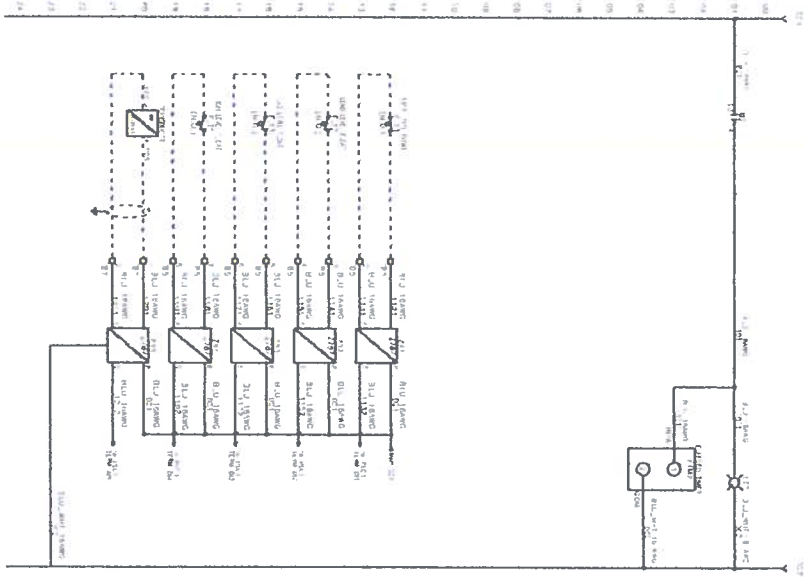
----- DISTED LINE INDICATES -----
FUSED WIRING.

USE COPPER CONDUITS ONLY.

TEMPERATURE RATING OF CONDUITS IS TO BE
90°C (182°F) FOR UNDER 100A
75°C (167°F) FOR OVER 100A

BRANCH CIRCUIT PROTECTION SHALL BE PROVIDED BY
THE INSTALLER MUST BE SIZED ACCORDING TO
PUMP/MOTOR MANUFACTURING SPECIFICATIONS
WIRING CORRECT ORIGINALLY ON CONTROL PANEL.
```

FIELD WIRING TORQUE S.F.C.S.		U _L # E354616		DRAWN BY: MSS		DATE: 05/03/23	
TERMINAL BLOCK UT 2.5	5 N=1-B	TOTAL FLA	194A	APPROVED BY: DO		DATE: 05/04/23	
TERMINAL BLOCK UT 4	7 N=1-B						
TERMINAL BLOCK UT 6	15 N=1-B						
TERMINAL BLOCK UT 10	25 N=1-B						
TERMINAL BLOCK UT 16	30 N=1-B						
TERMINAL BLOCK UT 35	40 N=1-B						
FST. 152, .11, .12 & .15 PCB		PHASE:	3 PH	THIS DRAWING CONTAINS PROPRIETARY INFORMATION AND SHALL NOT BE USED OR DISCLOSED WITHOUT PRIOR WRITTEN AUTHORIZATION.			
TRANSFORMER HLT. H2 & H3F		ENCLOSURE TYPE:	NEMA 3R				
TRANSFORMER HLT. H2 & H3		VOLTAGE:	5KA RMS				
VSPSP3-175 RT		SCR:	SYMMETRICAL				
VSPSP3-175 RT		FREQUENCY:	600V MAX				
DST. 1524000N 200A		60 HZ		TITLE: CP2449 CONTROL PANEL SCHEMATIC			
DST. 1524000N 200A		60 HZ					
DST. 1524000N 200A		60 HZ					
DST. 1524000N 200A		60 HZ		SIZE: DWG NO. 4339 PART NO. CP2449 REV.			
DST. 1524000N 200A		60 HZ		SCALE: NONE SHEET 2 of 3			

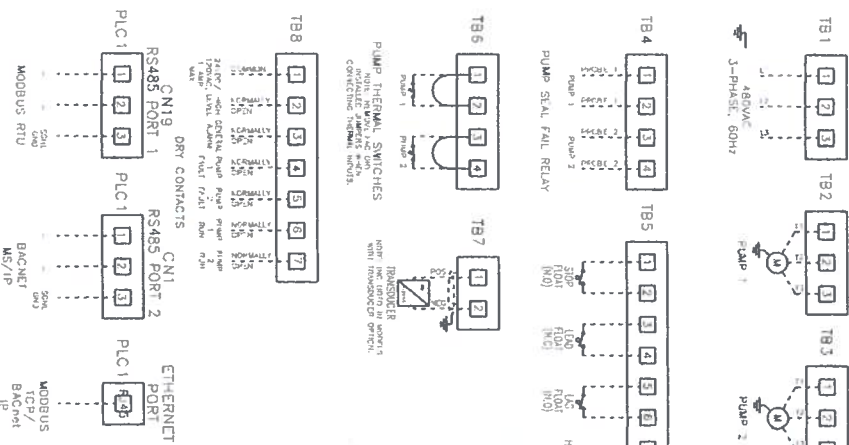


MULTI-TAP TRANSFORMER:
CONNECT TAP TO TAP TO APPROPRIATE TRANSFORMER VOLTAGE. SEE BELOW FOR CONNECTIONS.
FOR TAP OPERATION, CONNECT TO FUSE INPUT HF & TO TRANSFORMER TAP HF.
FOR TAP OPERATION, CONNECT TO FUSE INPUT HF & TO TRANSFORMER TAP HF.
FOR TAP OPERATION, CONNECT TO FUSE INPUT HF & TO TRANSFORMER TAP HF.
FOR TAP OPERATION, CONNECT TO FUSE INPUT HF & TO TRANSFORMER TAP HF.

FIELD WIRING TORQUE SPECS.	
TERMINAL BLOCK UT 2-5	5 IN-LB
TERMINAL BLOCK UT 6	7 IN-LB
TERMINAL BLOCK UT 7	10 IN-LB
TERMINAL BLOCK UT 8	15 IN-LB
TERMINAL BLOCK UT 9	20 IN-LB
TERMINAL BLOCK UT 10	25 IN-LB
TERMINAL BLOCK UT 11	30 IN-LB
TERMINAL BLOCK UT 12	35 IN-LB
TERMINAL BLOCK UT 13	40 IN-LB
TERMINAL BLOCK UT 14	45 IN-LB
TERMINAL BLOCK UT 15	50 IN-LB
TERMINAL BLOCK UT 16	55 IN-LB
TERMINAL BLOCK UT 17	60 IN-LB
TERMINAL BLOCK UT 18	65 IN-LB
TERMINAL BLOCK UT 19	70 IN-LB
TERMINAL BLOCK UT 20	75 IN-LB
TERMINAL BLOCK UT 21	80 IN-LB
TERMINAL BLOCK UT 22	85 IN-LB
TERMINAL BLOCK UT 23	90 IN-LB
TERMINAL BLOCK UT 24	95 IN-LB
TERMINAL BLOCK UT 25	100 IN-LB

UL # E354616	UL # E354616
APPROVED BY: MSS	DATE: 05/04/23
DATE: 05/04/23	

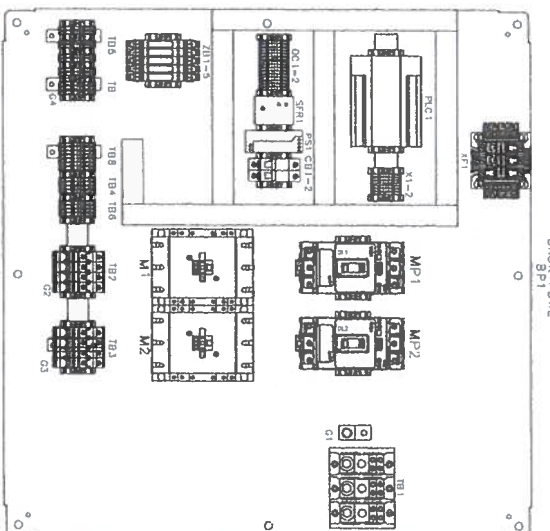
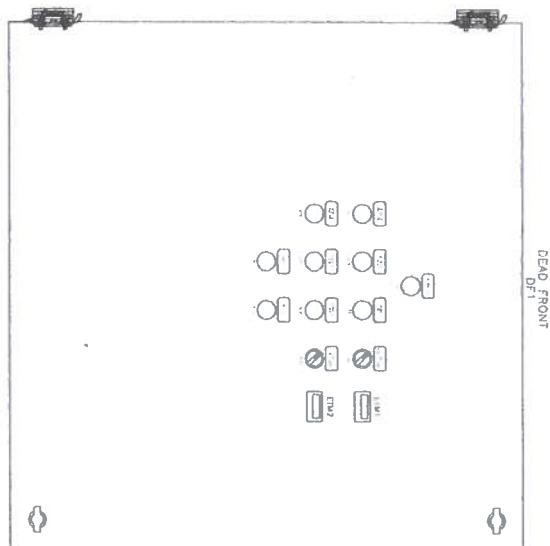
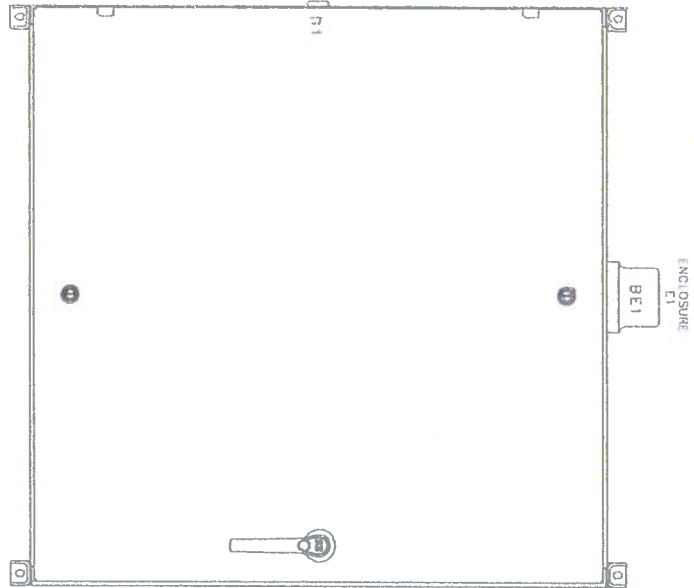
THIS DRAWING CONTAINS PROPRIETARY INFORMATION AND SHALL NOT BE USED OR DISCLOSED WITHOUT PRIOR WRITTEN AUTHORIZATION.	
SIZE	DWG NO
B	4339
SCALE	NONE
REV	3 of 3



SEE WATER

CONTROL PANEL SCHEMATIC

CP2449



UL # E354616		DRAWN BY: MSS		DATE: 05/03/23	
TOTAL FLA: 194A		APPROVED BY: DO		DATE: 05/04/23	
LARGEST MOT. FLA: 96A				THIS DRAWING CONTAINS PROPRIETARY INFORMATION AND SHALL NOT BE USED OR DISCLOSED WITHOUT PRIOR WRITTEN AUTHORIZATION.	
ENCLOSURE TYPE: NEMA 3R					
PHASE: 3 PH					
VOLTAGE: 480 VAC					
FREQUENCY: 60 HZ		SCCR: 5KA RMS		SYMMETRICAL	
600V MAX					
TITLE: CP2449		SIZE: B		DWG NO. 4340	
CONTROL PANEL LAYOUT		PART NO.		CP2449	
SCALE: NONE		SHEET		1 OF 2	

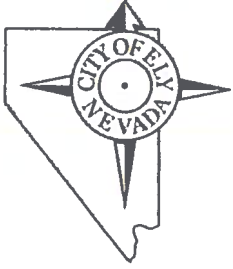


QTY	MANUFACTURER	DESCRIPTION	PART NUMBER	REF.
1	Saginaw	P.S. 3R Enclosure 36x36x12	SCE-36EL3612LPPL	E1
1	Saginaw	Dead Front	SCE-DF36EL36LP	DT
1	Saginaw	Back Panel	SCE-36P36	BP1
2	Shamrock	22MM 3 Way Switch (Spring Return)	RB2-B07	N/A
5	Shamrock	Selector Switch Collar	RB2-B	N/A
8	Shamrock	Contact Block	RB2BE101	N/A
2	Shamrock	22MM Push Button	RB2-BA2	N/A
5	Automation Direct	22MM Red 24V	ECX2051-24L	N/A
3	Automation Direct	22MM Green 24V	ECX2052-24L	N/A
1	Ingram	Beacon	R10-SM	BE1
1	Ingram	Beacon Globe	CLXGLBR	BE1
1	Ingram	Buzzer	PB-024-AD	B1
2	Schneider	Motor Protector	GV4PB115N	MP1-2
2	Schneider	Slide Mount Auxiliary	GV4AE11	OL1-2
2	Schneider	Contact	LC1D115G7	M1-2
1	Phoenix Contact	Power Supply (60W)	Z902992	PS1
1	Schneider	Circuit Breaker 6A 1 Pole	M9F22106	CB2
1	Schneider	Circuit Breaker 3A 1 Pole	M9F22103	CB1
1	Schneider	Distribution Block	9080LBA263104	TB1
1	Schneider	Distribution Block Cover	9080LBA33	TB1
1	Macromatics	Seal Fail Dual Channel Relay	SFP120C 100	SFR1
1	Macromatics	3 Pin Socket	70169-D	SFR1
1	Schneider	Fused Transformer 150VA	9070TF150D20	XF1

QTY	MANUFACTURER	DESCRIPTION	PART NUMBER	REF.
2	Mersen	KLDR 1 1/2A Fuse	KLDR 1-1/2	XF1
1	Mersen	FLM 2A Fuse	FLM-2A	XF1
2	TruMeter	Elapsed Time Meter	6320-2500-0000	ETM1.2
1	Schneider	Modicon M172 PLC	TM172PBG42RI	PLC1
1	Schneider	Terminals For M172 PLC	TM172ASC1842	PLC1
1	Bundy	Ground Lug	S250	G1
2	Phoenix Contact	Terminal Block UT-35-PE	3044241	G2-3
6	Phoenix Contact	Terminal Block UT-35	3044225	TB2-3
25	Phoenix Contact	Terminal Block UT-4	3044102	TB3-5
1	Phoenix Contact	Terminal Block UT-4-PE	3044128	G4
21	Phoenix Contact	Terminal Block UT-2.5	3044076	DC1-2 X1-2
3	Phoenix Contact	Terminal Bridge UT-2.5 5 Pos	3030190	N/A
2	Phoenix Contact	Terminal Bridge UT-2.5 3 Pos	3030174	N/A
1	Phoenix Contact	Terminal Bridge UT-2.5 2 Pos	3030161	N/A
29	Phoenix Contact	End Stop	3022218	N/A
13	Phoenix Contact	End Cover	3047028	N/A
4	Altech	Angled Mounting Bracket	C4603	N/A
4	See Water	N.O. Narrow Angle Flood 20'	95-43	N/A
1	Polycraft	Label Warning #2 Electric Shock	PC-7145	N/A
1	UL	698A UL Label	N/A	N/A

UL # E354616		DRAWN BY: MSS		DATE: 05/03/23	
TOTAL FAL: 194A		APPROVED BY: DO		DATE: 05/04/23	
LARGEST MOT. FLA: 96A		ENCLOSURE TYPE: NEMA 3R		SCHEMATIC: 5KA RMS	
PHASE: 3 PH		VOLTAGE: 480 VAC		FREQUENCY: 60 HZ	
		THIS DRAWING CONTAINS PROPRIETARY INFORMATION AND SHALL NOT BE USED OR DISCLOSED WITHOUT PRIOR WRITTEN AUTHORIZATION.			
TITLE: CP2449		SIZE: B		SCALE: NONE	
CONTROL PANEL LAYOUT		DWG NO. 4340		PART NO.	
SHEET		2 OF 2		REV	





CITY OF ELY

501 Mill Street Ely, Nevada 89301

City Hall (775) 289-2430

Cityofelynv.gov

INVITATION TO BID

NOTICE IS HEREBY GIVEN that the City of Ely is accepting bids for TWO (2) submersible pumps for the City of Ely Lift station located in the White Pine County Industrial Park three (3) miles north of Ely. **Interested parties are to email Public Works Supervisor Mike Cracraft at: PublicWorks@cityofelynv.gov for bid specification information.** Bids will be awarded on price AND availability.

Bids are to be enclosed in a sealed envelope clearly marked, “**LIFT STATION PUMPS**” and deposited with Jennifer Lee, City Clerk, City of Ely, 501 Mill Street, Ely, Nevada 89301 no later than Monday, May 8, 2023, at 3:00 pm. **EMAIL BIDS WILL NOT BE ACCEPTED.**

Bids will be opened on Monday, May 8, 2023, at or shortly after 3:00 pm at City Hall located at 501 Mill Street, Ely, Nevada 89301. The Ely Municipal Utilities Board will make a recommendation to the Ely City Council on which bid should be accepted. The Ely City Council shall make the final decision awarding the bid at or shortly after 5:00 pm May 11, 2023, at the Ely City Council meeting, located in the Volunteer Fire Hall, 499 Mill Street, Ely, Nevada 89301. The successful bidder will be notified by the City Clerk on May 12, 2023, either by email or regular mail. Bidders mailing their bids assume the risk of late delivery.

The City of Ely reserves the right to reject any and all bids submitted, as is deemed in the best interest of the City of Ely.

Dated this 7th day of April 2023.

Publish: Ely Times April 7, 2023

1-1 SEWER LIFT STATION

1-1.1.0 PUMPS

The Vendor shall furnish two (2) pumps and supporting equipment in accordance with these Specifications.

1-1.1.1 TYPE. Pumps shall be submersible, centrifugal type designed to handle raw unscreened sewage and waste products. The two pumps (including all parts thereof) shall be identical and replaceable in every respect. Pumps shall be capable of passing a three (3) inch sphere.

1-1.1.2 SIZE. Four (4) inch discharge.

1-1.1.3 SERVICE CONDITIONS AND PERFORMANCE REQUIREMENTS.

POWER SUPPLY – 460 volt 3 phase 60 HZ.

WATER TEMPERATURE - 33°F. to 80°F.

NPSH – 8 inches to 10 ft.

CAPACITY – 450 GPM @ 205 ft. TDH

MOTOR H.P. – 75 (minimum)

SERVICE – Operation may be intermittent but units shall be designed for continuous duty.

1-1.1.4 GENERAL DESIGN. The design shall be such that pumping units will be automatically connected to the discharge piping when lowered into place on twin guide bars, on the discharge connection. The pumps shall be easily removable for inspection or service, requiring no bolts, nuts or other fastenings to be removed for this purpose, and no need for personnel to enter pump well. Each pump shall be fitted with a hot dipped galvanized chain of adequate strength and length to permit raising the pump for inspection and removal.

1-1.1.5 PUMP BASE. No portion of the pump shall bear directly on the floor of the sump.

1-1.1.6 PUMP CASE. The pump case shall be made of close-grained cast iron free of blowhole and defects. The casing shall be designed to pass solids of the size previously specified. There shall be no internal ribs or guide vanes in the case and the surface of all water passages shall be smooth and free from fins, projections and rough spots.

1-1.1.7 IMPELLER. The impeller shall be gray iron construction with a minimum number of vanes. All surfaces shall be free of hollows and projections and the impeller shall be dynamically balanced with wear ring attached. The impeller shall be keyed and locked to the shaft with stainless steel components and any special tools necessary to remove the impeller from the shaft or attaching a new impeller to the shaft shall be furnished by the Contractor. Each impeller shall be trimmed to the exact flow and head conditions.

SHAFT. The motor and pump shaft shall be stainless steel.

1-1.1.8 MISCELLANEOUS. All external belts, nuts, and pins shall be stainless steel. The discharge elbow shall be cast iron. The lifting chain, guide rail and guide bracket shall be galvanized steel.

1-1.1.9 GUIDES. A sliding guide bracket shall be an integral part of the pumping unit and the pump casing shall have a machined neoprene gasketed, positive seal connection to the cast iron discharge elbow, which shall be bolted to the floor of the sump and so designed as to receive the pump casing connector without the need of any bolts or nuts.

1-1.1.10 SEAL. Sealing of the pumping unit to the discharge connection shall be accompanied by a simple linear downward motion of the pump with the entire weight of the pumping unit guided to and pressing tightly against the discharge connection; no portion of the pump shall bear directly on the floor of the sump and no rotary motion of the pump shall be required for sealing.

1-1.2.0 GUIDES

Lower guide holders shall be integral with discharge connection; guide bars shall be of standard weight galvanized steel pipe of the size 2-1/2" diameter or as recommended by the manufacturer and shall be approved by the City. Pipe shall be cut to the exact length.

1-1.3.0 MOTORS.

Motors shall be explosion proof and designed for use in hazardous locations and carry Underwriters Laboratories, Class 1, Group D, Division 1 listing. The pump and motor unit shall meet UL portable Utilization Equipment to eliminate the need for rigid electrical conduit. Flexible motor cable shall be supplied by the manufacturer. Pump motor cable shall be suitable for submersible pump applications with the type and identification permanently embossed on the cable. The motor cable shall be of sufficient length to reach motor starter control box without splicing.

1-1.3.1 CONSTRUCTION. Pump motor shall be housed in an air-filled or oil-filled watertight casing and shall have Class F insulated windings, which shall be moisture resistant. The motor shall be Nema Design B rated 155°C maximum. All three phase motors shall be dual voltage having a voltage tolerance of +10%-14% of nameplate value. Pump motors shall have cooling characteristics suitable to permit continuous operation, in a totally, partially, or non-submerged condition. The pump shall be capable of running dry continuously in a totally dry condition. Before final acceptance, a field running test demonstrating this ability, with 23 hours of continuous operation under the above conditions, shall be performed for all pumped being supplied, if required.

1-1.3.2 PERFORMANCE. Each motor shall be furnished with the following characteristics which shall be stated on the motor name plate:

Horse Power	75
Speed	1750
Volts	460
Phase	3
Hertz	60
Service Factor	1.15

1-1.3.3 MOISTURE PROTECTION. The pump and motor unit shall be provided with double tandem seals, thermal overload protection and moisture sensing probes.

1-1.4.0 CONTROLS AND WIRING

The pump installation shall be equipped float levels for automatic control using four suspended, enclosed, watertight liquid level sensors positioned and other necessary electric controls to provide automatic operation. Controls shall be explosion proof and designed for use in hazardous locations.

The sequence of operation will be determined by the settings on the four liquid level float sensors. Normal operation will call for one pump to be started on rising liquid levels and to run continuously until the low level cut-off point is reached.

An alternator shall be provided which will select the opposite pump to operate on the next pumping cycle in a similar manner. If one pump cannot handle the inflow and the level rises to an abnormal level, the non-operating pump will be started and both pumps will operate parallel until the level fall to the low level cut-off point. The system shall provide for immediate transfer to the non-operating pump in case the operating pumps fails due to overload. An optional manual control shall also be provided.

1-1.4.1 MOTOR CONTROL CENTER. The Vendor shall furnish a ready to install a single control center, fully wired, to include all specified controls for both pumps and the lift station components. The pump control panel shall be a functionally integrated control unit complete with combination starters and a common level sensor-actuated control system. The controls will be mounted in a NEMA 3, deadfront steel panel. Controls within the deadfront panel shall be within a weatherproof, dust resistant and tamper-proof enclosure. A full-hinged door on this weatherproof enclosure will open to allow complete access to the control panel. Combination starters and control enclosure will contain full width wiring gutter at the top and bottom with adequate room for the wiring. The control enclosure shall be provided with hasp and lock.

The control display shall include pump running lights, pump hand-off auto selector switches, high water alarm light and reset push button, thermal overload and reset push buttons, and an external flashing red alarm light. Any alarm condition mentioned above shall actuate the alarm light.

The panel circuitry shall be capable for future transmission of alarm status via SCADA. The NEMA 3, dead front structure shall be capable of being padlocked.

1-1.4.2 STARTERS. The motor controls shall be combination type with magnetic starters and special motor circuit protectors. The magnetic starters shall be full sized NEMA rated starters with three-leg, inverse time thermal overload relays. The motor circuits, starting equipment, and motors, shall be capable of tripping in 0.05 seconds or less at 500% rated motor current. The motor circuit protectors shall be provided with operator mechanism capable of operation with the starter compartment door closed. The mechanism shall have provisions for locking the protector in the ON or OFF position and shall clearly indicate ON, OFF, or TRIPPED positions. An interlock shall require the protector to be placed in the OFF position before the door can be opened. The starter compartment door shall contain an externally mounted overload reset mechanism. A three-position selector switch with HAND, OFF, AUTO legend plate will be provided for each combination starter.

1-1.4.3 The control system shall include a two pole control circuit breaker, 120 volt control transformer, transformer and circuit protective fuses, alternator, and control delay and terminal blocks

as required to comply with the functional specifications. The control system shall provide that the voltage applied to the liquid level regulators in the Lift Station shall not exceed 120 volts A.C.

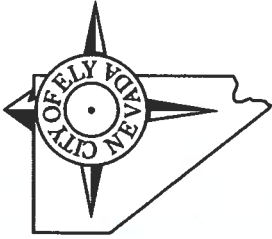
1-1.5.0 ELECTRICAL POWER

1-1.5.1 WIRING. All wiring to and from the control panel shall be insulated and sheathed suitable for underwater service. Cable from pump to control box for underwater service. Cable from pump to control box shall be one continuous piece without splice. Between the lift station wall and the control box the cable shall be placed in rigid electrical conduit wrapped with two (2) layers of scotch wrap and be buried underground at a depth of 2 feet. All wiring shall comply with applicable requirements of the National Electrical Code. Cable inside the reinforced concrete valve box shall be placed in steel conduit.

1-1.6.0 PUMP TEST

The pump manufacturer shall perform the following tests on each pump motor assembly before shipment from the factory:

1. Megger the pump for insulation breaks or moisture.
2. Prior to submergence, the pump shall be run dry and be checked for correct rotation.
3. Pump shall be run for 30 minutes in a submerged condition.
4. Pump shall be removed from test tank, meggered immediately for moisture; oil plugs removed for checking lower seal; inspection plug removed for checking of upper seal and possible water intrusion of stator housing.
5. A written certified test report giving the above information shall be supplied with each pump at the time of shipment.
6. All end of pump cables will then be fitted with rubber shrink fit boot to protect cable prior to electrical installation.



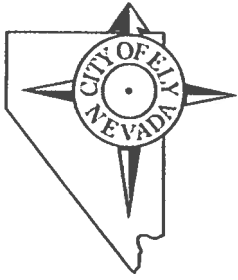
CITY OF ELY

501 Mill Street Ely, Nevada 89301
City Hall (775) 289-2430
Fax (775) 289-1463
Cityofclynv.gov

City of Ely
Personal Property Sale
Bid Tabulation

Bid Items	<u>Bidder</u>	<u>Bidder</u>	<u>Bidder</u>	Highest Bid for Property
1995 Ford E350 Ambulance VIN: 1FDKE30F4SHB31013 Minimum Bid: \$100.00	Chris Hall \$150.00	Wayne Henriod \$575.00	Dustin Melser \$2,501.00	Dustin Melser \$2,501.00

Present for Bid Opening: City Clerk Lee and Administrative Assistant Cobb



CITY OF ELY

501 Mill Street Ely, Nevada 89301
City Hall (775) 289-2130
Cityofelynv.gov

May 11, 2023

Nevada Senate Finance Committee Members
Email: SenFIN@sen.state.nv.us

Dear Chairwoman Dondero Loop, Vice Chairwoman Cannizzaro, Senator Harris, Senator Neal, Senator Nguyen, Senator Goicoechea, Senator SeEVERS Gansert, and Senator Titus:

The City of Ely is opposed to the proposed closure of the Ely Conservation Camp. The Conservation Camps are the most cost-effective way to house inmates and in the thirty-nine years since the Ely Conservation Camp opened, there have been numerous times the prison population has fallen; the program has been able to proceed with fewer crews at each camp. Further, proximity to Ely State Prison means that the Nevada Division of Forestry (NDF) and the Prison have easy accessibility to support each other. The opportunity for prison employees to cycle to/from the camp is a plus for the Nevada Department of Corrections (NDOC).

The Conservation Camp program makes money! Through projects with cooperating agencies like the Nevada Department of Transportation, Bureau of Land Management, United States Forest Service, and other agencies, Nevada Department of Forestry (NDF) crews are paid more than their costs. On the fire side of the program NDF fire crews contribute significantly to the State general fund from wages paid for the inmate crews by the federal agencies. Additionally, the State has invested significant money to construct the Ely Industry Shop; this shop built many of the second-generation crew vehicles at significant savings for the State and needs continued conservation camp support. Other agencies, like Nevada Department of Transportation (NDOT), Nevada Division of State Parks (NDSP), and Nevada Department of Wildlife (NDOW) can benefit from this shop and its capacity to paint vehicles in an approved paint shop and provide welding and repair support. The mechanic based at the shop is an invaluable resource for NDF by providing the capacity to send a qualified mechanic into the field in Eastern Nevada to effect repairs.

In the rural areas, conservation camp crews are a vital component of the wildland fire emergency response program. Compared to urban areas like Las Vegas and the Sierra Front, resources for a quick response to wildland fires are severely lacking. Conservation camp crews have done fuel management projects state-wide protecting small communities and the urban-wildland fire interface.

Conservation Camp crews improve our State's natural resources. The Ely Camp has provided support to NDOW habitat restoration in the past through performing prescribed fires at Kirch Wildlife Management

The City of Ely is an equal opportunity provider and employer.

Area and contracting with local ranches to perform prescribed fires to reinvigorate private pastures. The Ely Camp also provided support for NDOW and local ranches by contracting with NDOW to construct deer/elk fencing to protect alfalfa and meadow grass fields crucial to the success of the ranches and to reduce negative interactions with the States' wildlife herds.

Most importantly, elderly residents have depended on the Ely Conservation Camp to help clear snow, so they are able to get out in case of an emergency and have a safe environment for them to carry out daily tasks.

Please keep the Ely Conservation Camp open for our community.

Respectfully,

Nathan Robertson
Mayor

Cc: Governor Joe Lombardo
Nevada Department of Corrections Director James Dzurenda
Nevada Department of Forestry Forester and Fire warden Kacey KC.

CITY OF ELY

RESOLUTION 2023-04

For the purpose of augmenting the City of Ely's General Fund using unbudgeted revenue collected in the General Fund to apply towards the street repair expenses in the Street Fund.

WHEREAS, the City of Ely is an incorporated City within White Pine County, State of Nevada; and,

WHEREAS, the City of Ely has unbudgeted revenues in the amount of three hundred thousand dollars (\$300,000.00), from a transfer from the General Fund; and

WHEREAS, augmented revenue will be used for the street improvement expenses; and

WHEREAS, the Nevada Revised Statutes 354.598005 set forth the procedure to augment the budget of a city fund;

NOW THEREFORE, BE IT RESOLVED this 11th day of May 2023, the City of Ely, through its City Council, hereby authorize augmentation of the Street Fund from unbudgeted revenues collected from a transfer from the General Fund in the amount of Three hundred thousand Dollars (\$300,000.00), to be applied towards the street improvements.

DATED this ____ day of _____, 2023.

AYES: _____

NAYS: _____

ABSTAIN: _____

APPROVED:

ATTESTED TO BY:

CITY OF ELY

NATHAN ROBERTSON, MAYOR

JENNIFER LEE, CITY CLERK

5. Councilman Setterstrom - Discussion/For Possible Action - Revocation of Resolution 2006-07
Creating a Railroad Enterprise Fund Board.

Councilman Setterstrom stated in 2008 they started a Railroad Enterprise Fund to run the railroad to the north of McGill. Since 2010, the Railroad Enterprise Board has not met and the City Council has taken over that position with the property. I see no reason to continue this board. The board is comprised of two Management Board members, two City Council members and the EDC director for the County. We no longer have an EDC and two members of the City Council are now a part of the Management Board. If the money was put in by the power companies for legal fees, then it should go back to the Railroad, if we don't have any legal fees; otherwise, I think we should split it. For now I would like to just dissolve the Railroad Enterprise Fund and leave the funds in the existing accounts to be brought up at another time.

City Attorney Odgers stated the line to north is an asset within the budgetary cycle and is listed under the Enterprise Board, so you need to do a resolution to transfer back those assets into the General Fund, directing your City Administrator to create a separate line item for those assets.

Councilman Setterstrom moved to dissolve the Railroad Enterprise Fund Board, directing the City Attorney to go forward with a resolution transferring the Railroad Enterprise Fund's assets to the General Fund.

City Administrator Switzer stated we would also file an amended budget with the Department of Taxation.

Councilman Carson seconded Councilman Setterstrom's motion. The motion carried unanimously.

9. PUBLIC COMMENT

George Chachas stated his ongoing concerns regarding a building permit refund for his building roofing job; the Ruby Street valley gutter; 7th Street east curb/gutter; and ADA access at the County Administration building and Aquatic Center. Mr. Bassett mentioned \$5,000; that's City money and those that didn't pay have no right to money that they didn't put a dime into. Don't donate your share of the public safety building property; their plan is ancient history. If you look at what terrorists are doing with vehicles, you'll wipe out your fire and sheriff departments.

10. ADJOURNMENT: THE MEETING MAY BE ADJOURNED BY APPROPRIATE MOTION
OF THE CITY COUNCIL.

Councilman Setterstrom moved to adjourn the Regular Meeting of the Ely City Council at 7:34 p.m. Councilman Hanson seconded the motion. The motion carried unanimously.



MAYOR



ATTEST

CITY OF ELY

**A RESOLUTION CREATING A RAILROAD ENTERPRISE FUND AND ESTABLISHING THE
TERMS AND CONDITIONS UNDER WHICH THE FUND SHALL OPERATE AND OTHER
MATTERS PROPERLY PERTAINING THERETO.**

Whereas NRS 354.517 provides for the creation of an Enterprise Fund for local government business activities, and

Whereas NRS 354.612 provides for creation of an Enterprise Fund by resolution subject to approval of the Nevada Department of Taxation and that certain account requirements are met within the fund, and

Whereas the City of Ely has determined an Enterprise Fund would be a proper way to deal with the overall budget of a regional railroad transportation facility, and

Whereas The City of Ely and the White Pine Historical Railroad Foundation jointly own a 128 mile section of railroad from Cobre, Nevada to the McGill Junction, Nevada but neither entity currently budgets the railroad activity conducted thereupon in an enterprise fund,

NOW THEREFORE, in consideration of the foregoing facts,

1. The City of Ely hereby creates an Enterprise Fund entitled Ely Railroad Enterprise Fund whose object will be the operation, maintenance, and enhancement of a regional transportation facility for the financial benefit of the citizens of Ely and its environs, and
2. The resources used to establish the Ely Railroad Enterprise Fund will be from the General Fund of the City of Ely.

3. The management of Ely Railroad Enterprise Fund's income, expenses, depreciation and general revenues shall be consistent with a business enterprise exercising the business judgment rule.

4. The expenses of providing a regional railroad facility on a continuing basis to the general public shall be financed or recovered primarily through charges to the users.

5. A periodic determination of revenues earned, expenses incurred and net income is consistent with public policy and is appropriate for capital maintenance, management control, accountability and other governmental purposes and all accounting shall be performed in accordance with Generally Accepted Accounting Principles.

6. Revenues and expenses will be deposited to and paid from Account No. _____ at the First National Bank in Ely, White Pine County, Nevada.

7. One of the financial objectives of the fund will be to recover the complete cost of operation of the activity, including overhead, and to produce sufficient operating revenue to maintain the long-term financial viability and solvency of the fund.

8. The Ely Railroad Enterprise Fund Board shall consist of five members: two members of Railroad Board of Trustees, two members of the White Pine Historical Railroad Foundation Management Board and a designee from the White Pine County Economic Development Council or its successor in interest.

Dated: August 16, 2006.

City Council

J. B. G.

Jack Smith

Don Allen

Stephen March

George C. Chadler
Mayor

Attest:

James L. Alworth
City Clerk



AMENDED
RESOLUTION NUMBER 2006-07

CITY OF ELY

**A RESOLUTION CREATING A RAILROAD ENTERPRISE FUND AND ESTABLISHING THE
TERMS AND CONDITIONS UNDER WHICH THE FUND SHALL OPERATE AND OTHER
MATTERS PROPERLY PERTAINING THERETO.**

Whereas NRS 354.517 provides for the creation of an Enterprise Fund for local government business activities, and

Whereas NRS 354.612 provides for creation of an Enterprise Fund by resolution subject to approval of the Nevada Department of Taxation and that certain account requirements are met within the fund, and

Whereas the City of Ely has determined an Enterprise Fund would be a proper way to deal with the overall budget of a regional railroad transportation facility, and

Whereas The City of Ely and the White Pine Historical Railroad Foundation jointly own a 128 mile section of railroad from Cobre, Nevada to the McGill Junction, Nevada but neither entity currently budgets the railroad activity conducted thereupon in an enterprise fund,

NOW THEREFORE, in consideration of the foregoing facts,

1. The City of Ely hereby creates an Enterprise Fund entitled Ely Railroad Enterprise Fund whose object will be to oversee the operation, maintenance, and rehabilitation of the aforementioned railroad for commercial uses for the benefit of the citizens of Ely and its environs, and

2. The resources used to establish the Ely Railroad Enterprise Fund will be from the General Fund of the City of Ely.

3. The management of Ely Railroad Enterprise Fund's income, expenses, depreciation and general revenues shall be consistent with a business enterprise exercising the business judgment rule.

4. The expenses of providing a regional railroad facility on a continuing basis to the general public shall be financed or recovered primarily through charges to the users.

5. A periodic determination of revenues earned, expenses incurred and net income is consistent with public policy and is appropriate for capital maintenance, management control, accountability and other governmental purposes and all accounting shall be performed in accordance with Generally Accepted Accounting Principles.

6. Revenues and expenses will be deposited to and paid from a separate budgetary account of the City of Ely General Banking Account in White Pine County, Nevada.

7. One of the financial objectives of the fund will be to recover the complete cost of operation of the activity, including overhead, and to produce sufficient operating revenue to maintain the long-term financial viability and solvency of the fund.

8. The Ely Railroad Enterprise Fund Board shall consist of five members:
two members of Ely City Council, two members of the White Pine Historical Railroad
Foundation Management Board and a designee from the White Pine County Economic
Diversification Council or its successor in interest.

Dated: Feb 14, 2008.

AMENDED: Feb 14, 2008

Ely City Council

[Signature]

Ron DiLuna

Stephen Marsh

Jim Voth

James Meyer

[Signature]

Mayor

Attest:

James D. Alworth
City Clerk

